

# Bloomington-Normal<sup>area</sup>

## 2012 VISITOR GUIDE



## Discover More

Shop the Discover More! Store at the Children's Discovery Museum for educational toys & games, gadgets & gizmos, and gift items galore!

101 E BEAUFORT ST.  
NORMAL, IL



120 W. NORTH STREET  
309.452.6334  
[www.MediciNormal.com](http://www.MediciNormal.com)

## D.P. Dough

DELIVERS CALZONES  
THE PIZZA ALTERNATIVE

121 E. Beaufort St.  
309.888.ZONE (9663)  
order online at  
[www.dpdoughonline.com](http://www.dpdoughonline.com)



**WE DELIVER!**

207 W. NORTH ST. 305 S. MAIN ST.  
452.8200 451.1800

2301 E. WASHINGTON  
664.6800

## Marriott

BLOOMINGTON-NORMAL  
HOTEL & CONFERENCE CENTER

309.862.9000  
[www.marriottnormal.com](http://www.marriottnormal.com)



cafe & dessert bar



## BABBITT'S BOOKS

309.454.7393  
888.875.3773  
HOURS:  
M-SAT 10-6 PM  
SUN NOON-4 PM

119 E. Beaufort

[www.babbittsbooks.com](http://www.babbittsbooks.com)

## Ecology Action Center

Your resource for making a world of difference

202 W College Ave  
Normal, IL 61761  
(309) 454-3169

[www.ecologyactioncenter.org](http://www.ecologyactioncenter.org)



[WWW.THEGARLICPRESS.COM](http://WWW.THEGARLICPRESS.COM)  
108 North Street  
309.452.8841



Visit us on the web at [www.uptownnormal.com](http://www.uptownnormal.com)

U P T O W N  
**N O R M A L**  
*Changing the definition!*



# Plan some DOWN time...

Downtown Bloomington's shops and venues offer a break from your daily 9-to-5. Get some 'retail therapy,' some culture and some exceptional food, too!



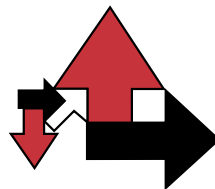
## MAIN GALLERY 404, INC.

A fine art gallery showing the work of local artists in a variety of media.

404 N. Main Street, Bloomington  
309.828.9500

[www.maingallery404.com](http://www.maingallery404.com)

## FOX & HOUNDS



Hair Studio • Day Spa • Store

*40 Years of Excellence—  
Services and Products*

200 W. Monroe Street  
309-829-0482

[www.fox-n-hounds.com](http://www.fox-n-hounds.com)

Discover the Lincoln  
connection...

1000 East Monroe Drive  
Bloomington, IL  
(309) 828-1084  
[www.daviddavismansion.org](http://www.daviddavismansion.org)



**BIG House.**

**BIG Story.**

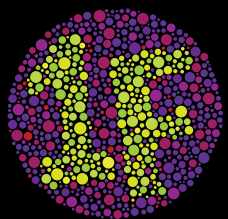
**BIG Adventure.**

Find Judge David Davis on [facebook](#) & Follow on Twitter @Davis\_Mansion



513 North Main Street  
Bloomington, Illinois  
309.827.3333  
[www.lancasterrestaurant.com](http://www.lancasterrestaurant.com)

Seafood, Steaks and Nightly Features  
Indulgent Desserts | Extensive Wine List  
Catering | Private Lunches



## FIRST FRIDAYS

**5-8pm**  
every month in Downtown Bloomington

Find us on Facebook:  
**FIRST FRIDAYS**



**SPECS  
AROUND TOWN**

317 N. CENTER • BLOOMINGTON  
(309)82-SPECS  
[SPECSAROUNDTOWN.COM](http://SPECSAROUNDTOWN.COM)

The most unique eyewear and  
accessories in Central Illinois  
since 1998



## Bloomington Public Library

*Books are just the beginning.*

### Library Hours

M - Th 9 am-9 pm  
F & Sat 9 am-5 pm  
Sun 1-5 pm

205 E. Olive Street, Bloomington  
309-828-6091

[BloomingtonLibrary.org](http://BloomingtonLibrary.org)



Pictured: Youth Ensemble in full  
length Don Quixote

**USA Ballet Company  
Youth Ensemble & Academy**  
105 W. Jefferson, Bloomington  
**309.820.0300**

Classes for Ages 3 thru adult:  
Ballet-Pointe-Jazz-Boys Classes-Partnering-  
Flex & Strength- Summer Intensives

Co-founder/Artistic Director Michelle Holmes-Bello



## GREGOR GALLERY

311 N. Main St., Bloomington  
[www.hgregor.com](http://www.hgregor.com) ■ [flatscaper@aol.com](mailto:flatscaper@aol.com)

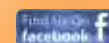
**CALL FOR AN APPOINTMENT**  
309-828-8838 ■ 309-829-3951  
Also open Saturdays 10am-2pm

Landscapes, Flatscapes, Trailscapes, Vibrascapes  
by artist **HAROLD GREGOR**



## Downtown Bloomington FARMERS' MARKET

Saturdays 7:30am-noon  
May 12-October 27, 2012  
on the courthouse square



Downtown Bloomington  
Farmers' Market & Artists' Alley

## 2011-12 Season

featuring:  
**The Four Tops Rockapella**  
**Ailey II Celtic Thunder**  
**Leon Redbone Blast!**  
**The StepCrew George Winston**



(...and much, much more!)

309.434.2777 / [www.artsbloomington.org](http://www.artsbloomington.org)



**DOWNTOWN  
BLOOMINGTON**

[DowntownBloomington.org](http://DowntownBloomington.org)



# Welcome

We are delighted to present you with the 2012 Visitors Guide. This guide will provide you with the most up to date information on points of interest in our charming communities.

The Bloomington-Normal Area continues to be one of the most alluring metropolitan areas in Illinois. Our community appreciates a remarkable quality of life. Our location in the heart of Illinois at the junction of Interstates 55, 39 and 74 makes accessibility easy. We are just a few hours from Chicago and St. Louis. Bloomington-Normal also boasts a bustling airport as well as frequent Amtrak service.

Experience one of our outstanding hotels, dine in one of our delectable restaurants or visit our exciting leisure attractions. The Children's Discovery Museum, the David Davis Mansion and the McLean County Museum of History are just a few of our unique attractions. Enjoy premier entertainment with the Bloomington Center for the Performing Arts, the U.S. Cellular Coliseum or Illinois State University's Braden Auditorium. There is something for everyone in Bloomington-Normal!

We are proud to be the headquarters for State Farm Insurance, Mitsubishi Motors North America, Inc., COUNTRY Financial and BEER NUTS, Inc. Our institutions of higher education include Illinois State University, Illinois Wesleyan University, Heartland Community College and Lincoln College.

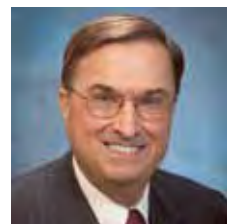
Our area is celebrated for its Midwestern Hospitality! We hope you enjoy your visit and return often.

Best Regards,

*Steve Stockton*

*Crystal Howard*

*Christopher Koos*



**MAYOR STEVE STOCKTON**  
City of Bloomington



**CRYSTAL HOWARD, DIRECTOR**  
Bloomington-Normal Area  
Convention and Visitors Bureau



**MAYOR CHRIS KOOS**  
Town of Normal



# Table of Contents

<b>ARTS &amp; THEATRE</b> .....	<b>4-7</b>
<b>MUSEUMS &amp; HISTORY</b> .....	<b>8-11</b>
<b>SPORTS &amp; ENTERTAINMENT</b> .....	<b>14-17</b>
<b>AGRITOURISM</b> .....	<b>18-21</b>
<b>GOLF GUIDE</b> .....	<b>22-23</b>
<b>DINING &amp; NIGHTLIFE</b> .....	<b>24-31</b>
<b>SHOPPING</b> .....	<b>32-37</b>
<b>ANNUAL EVENTS</b> .....	<b>38-41</b>
<b>AREA EDUCATION</b> .....	<b>42-47</b>
<b>PARKS &amp; RECREATION</b> .....	<b>48-51</b>
<b>COMMUNITY INFO</b> .....	<b>52-55</b>
<b>TRANSPORTATION</b> .....	<b>56-57</b>
<b>ACCOMMODATIONS</b> .....	<b>58-63</b>
<b>BLOOMINGTON-NORMAL AREA MAP</b> .....	<b>64-65</b>



3201 CIRA Drive, Suite 201  
Bloomington, IL 61704  
*Located inside the Central Illinois Regional Airport*  
800.433.8226 • 309.665.0033  
[www.bloomingtonnormalcvb.org](http://www.bloomingtonnormalcvb.org)  
[twitter.com/bnacvb](https://twitter.com/bnacvb)  
[facebook.com/bnacvb](https://facebook.com/bnacvb)

## ABOUT THIS GUIDE

The Bloomington-Normal Area Visitor Guide is published annually by the Bloomington-Normal Area Convention and Visitors Bureau (BNACVB) and is distributed locally and nationally throughout the calendar year. For advertising information, questions or comments about the Visitor Guide, please contact our office.

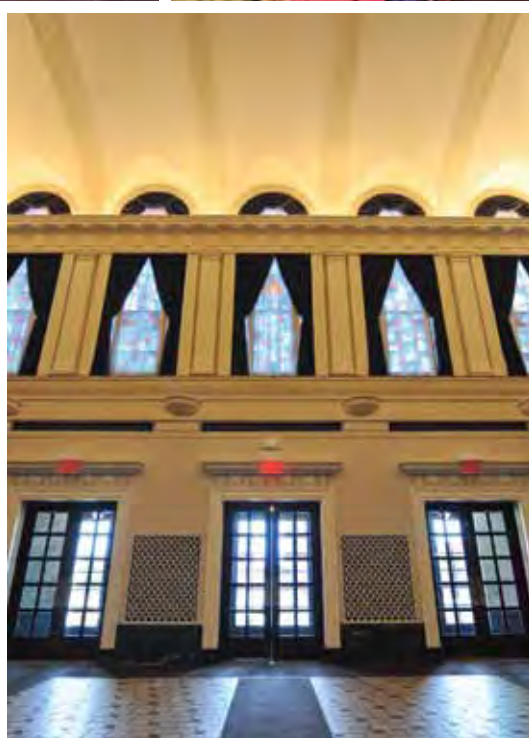
The Bloomington-Normal Area Convention and Visitors Bureau has made every attempt to verify the information contained in this guide. The BNACVB assumes no liability for incorrect or outdated information. The Bureau is a publicly funded organization and does not evaluate restaurants, attractions or events listed in this guide. The BNACVB implements a Hotel Standards program to provide hotel quality assurance for area visitors.

All information herein is based on materials submitted directly from the organization or business entity or through telephone surveys. Any admission fees or rates quoted in this publication are effective through December 31, 2012.

# Arts & Theatre

Bloomington-Normal boasts a lively arts scene headlined by the development of the Bloomington Cultural District, which includes the Bloomington Center for the Performing Arts and McLean County Arts Center. Bloomington-Normal also contains a thriving artist community living and working in Downtown Bloomington, two university galleries, a number of local theatre groups, the American Passion Play and the nationally-recognized Illinois Shakespeare Festival.

## ENJOY OUR CULTURAL ARTS!





## AMERICAN PASSION PLAY

600 North East Street  
Bloomington, IL 61701  
309.829.3903 • 800.354.9640  
[www.americanpassionplay.org](http://www.americanpassionplay.org)

Now in its 89th season, the American Passion Play is one of the oldest continuously performed passion plays in the United States. The play runs from March 10–31, 2012. This biblically accurate performance takes the audience on a spiritual journey to Palestine, 30AD where they travel with the living Christ, meet His Apostles and follow His ministry from the Sermon on the Mount to His resurrection and ascension. The play features beautiful scenery, live pipe organ music, live voices and even live animals.

## BLOOMINGTON CENTER FOR THE PERFORMING ARTS

600 North East Street  
Bloomington, IL 61701  
309.434.2777 • 866.686.9541  
[www.artsblooming.org](http://www.artsblooming.org)

The Bloomington Center for the Performing Arts (BCPA) is the centerpiece of the city's Cultural District, which also includes a festival park and a forthcoming creativity center for arts education. A recently renovated historic building with state-of-the-art lighting and sound equipment, the BCPA features a 1,200 seat auditorium, multipurpose ballroom and plays host to an annual season of nationally acclaimed touring artists and area performing arts ensembles. Led by a group of specially trained docents, the fascinating history of the BCPA comes to life in the Behind the Curtain Tours. Tour participants are able to see the beautiful neo-Classical interior design of the BCPA and learn about the updates achieved in the building's significant renovation.

### BRADEN AUDITORIUM

100 North University Street  
Normal, IL 61761  
309.438.5444 (Box Office)  
[www.bsc.ilstu.edu](http://www.bsc.ilstu.edu)

### COMMUNITY PLAYERS THEATRE

201 Robinhood Lane  
Bloomington, IL 61701  
309.663.2121  
[www.communityplayers.org](http://www.communityplayers.org)

### CONKLIN'S BARN II DINNER THEATRE

1451 Timberline Road  
Goodfield, IL 61742  
309.965.2545  
[www.barn2.com](http://www.barn2.com)

### HEARTLAND THEATRE COMPANY

One Normal Plaza  
1110 Douglas Street  
Normal, IL 61761  
309.452.8709  
[www.heartlandtheatre.org](http://www.heartlandtheatre.org)

 Indicates tours are available.



## Galleries

### EATON STUDIO & GALLERY

411 North Center Street  
Bloomington, IL 61701  
309.828.1575  
[www.eatonstudiogallery.com](http://www.eatonstudiogallery.com)

### HAROLD GREGOR GALLERY

311 North Main Street  
Bloomington, IL 61701  
309.828.8838  
[www.hgregor.com](http://www.hgregor.com)

Harold Gregor Gallery features the paintings of artist Harold Gregor in four modes: realist panoramas, colorful aerial Flatscapes, energetic abstract "trail" paintings and Vibrascapes.

### MAIN GALLERY 404, INC.

404 North Main Street  
Bloomington, IL 61701  
309.828.9500  
[www.maingallery404.com](http://www.maingallery404.com)

Main Gallery 404, Inc. provides a venue for more than 40 local fine artists to display and sell their work in a variety of media.

### MCLEAN COUNTY ARTS CENTER

601 North East Street  
Bloomington, IL 61701  
309.829.0011  
[www.mcac.org](http://www.mcac.org)

### MERWIN & WAKELEY GALLERIES

Illinois Wesleyan University  
6 Ames Plaza West  
Bloomington, IL 61702  
309.556.3822  
[www.iwu.edu/art/galleries](http://www.iwu.edu/art/galleries)

### TIMOTHY KENT GALLERY & FRAMING

214 West Jefferson Street  
Bloomington, IL 61701  
309.828.0611  
[www.timothykentgallery.com](http://www.timothykentgallery.com)

### UNIVERSITY GALLERIES

Illinois State University  
110 Center for the Visual Arts  
Normal, IL 61790  
309.438.5487  
[www.cfa.ilstu.edu/galleries](http://www.cfa.ilstu.edu/galleries)

### ISU CENTER FOR THE PERFORMING ARTS

Corner of School Street and Beaufort Street  
Normal, IL 61790  
309.438.2535 (Box Office)  
[www.cfa.ilstu.edu](http://www.cfa.ilstu.edu)

### ILLINOIS SYMPHONY ORCHESTRA

600 North East Street  
Bloomington, IL 61701  
309.434.2777 • 866.686.9541  
[www.ilsymphony.org](http://www.ilsymphony.org)

### IWU MCPHERSON THEATRE

2 Ames Plaza  
Bloomington, IL 61701  
309.556.3232  
[www.iwu.edu/theatre](http://www.iwu.edu/theatre)

### IWU WESTBROOK AUDITORIUM

1210 North Park Street  
Bloomington, IL 61701  
309.556.3061  
[www.iwu.edu/music](http://www.iwu.edu/music)

### MILLER PARK OUTDOOR SUMMER THEATER

1020 South Morris Avenue  
Bloomington, IL 61701  
309.434.2260  
[www.bpard.org](http://www.bpard.org)

### NORMAL SUMMER MUSIC THEATRE

611 South Linden Street  
Normal, IL 61761  
309.454.9540  
[www.normalsummertheatre.com](http://www.normalsummertheatre.com)

### PRAIRIE FIRE THEATRE

P.O. Box 964  
Normal, IL 61761  
309.824.3047  
[www.prairiefiretheatre.org](http://www.prairiefiretheatre.org)

### SPIRITS OF BLOOMINGTON

309.846.4306  
[www.spiritsofbloomington.com](http://www.spiritsofbloomington.com)

### THEATRESCOOL

403 North Main Street  
Bloomington, IL 61701  
309.454.5892  
[www.theatrescool.com](http://www.theatrescool.com)

### USA BALLET

105 West Jefferson Street  
Bloomington, IL 61701  
309.820.0300  
[www.usaballet.us](http://www.usaballet.us)

USA Ballet tours from coast to coast performing in 4,000 seat theatres, lectures at colleges and brings ballet to rural America. In addition, the USA Ballet Academy is an internationally acclaimed ballet school teaching Vaganova, the traditional Russian style of classical ballet.

HIS LIFE  
changed our world.  
The experience could change YOURS.



HIS LIFE comes to yours in live voices, music... even live animals and rain! It's the experience of His life. But it could change yours.

March 10-31, 2012

To order, call toll free 1-800-354-9640  
or 309-829-3903.

Held at the comfortable and magnificent  
Bloomington Center for the Performing Arts,  
Bloomington, Illinois.  
Buffet lunch available!

[www.americanpassionplay.org](http://www.americanpassionplay.org)  
P.O. Box 3354, Bloomington, IL 61702-3354



*entertaining  
charming  
daring  
inspired*



Please join us for the 2012

ILLINOIS SHAKESPEARE FESTIVAL

SEASON

June 28<sup>th</sup> through August 11<sup>th</sup>

For tickets, call (309) 438-2535  
or visit [theFestival.org](http://theFestival.org)

Ewing Cultural Center  
48 Sunset Rd.  
Bloomington, Illinois



ACTOR: GERSON DACANAY PHOTO: PETER GUTHRIE





## Fairs & Festivals

### AIN'T NOTHIN BUT THE BLUES

July 20-21

[www.aintnothinbuttheblues.com](http://www.aintnothinbuttheblues.com)

The Ain't Nothin But The Blues festival has been keeping the blues alive and kicking in Central Illinois. The festival has grown from a one-day affair with five artists to a two-day, 5,000-plus attendee extravaganza drawing the biggest blues names in the country to Bloomington-Normal each July.

### CULTURAL FESTIVAL

August 17-19

[www.culturalfest.com](http://www.culturalfest.com)

Now in its 33rd year, the Cultural Festival continues to provide the community with a wide variety of live entertainment, mouth-watering food and community services in a festival and family atmosphere. This event draws nearly 15,000 to Bloomington-Normal each August.

### DANVERS DAYS

August 17-19

[www.orgsites.com/il/danvers](http://www.orgsites.com/il/danvers)

Danvers Days takes place each August in the Danvers Village Park and features entertainment, food, raffles, kids games, Bingo and Tug of War. Attendees also enjoy a carnival, craft show, community auction and the biggest parade in Central Illinois.

### HEYDAYS FESTIVAL

May 17-20

[www.heyworth-il.gov/heydays](http://www.heyworth-il.gov/heydays)

The annual Heyworth HeyDays Festival in downtown Heyworth, Illinois is fun for the entire family. The carnival, great food and talented entertainment is enjoyed all weekend long!

### ILLINOIS SHAKESPEARE FESTIVAL

June 28-August 11

[www.thefestival.org](http://www.thefestival.org)

The Illinois Shakespeare Festival exemplifies a long-established tradition of professional theatre devoted to performing the plays of William Shakespeare. The festival has been named one of the ten best theatre festivals anywhere by National Geographic. In addition

to the mainstage show, theatre-goers can also enjoy behind the scenes tours, live jazz music, nightly Green Shows, fine art fairs and ice cream socials with the cast and crew. Spend a pleasant summer's evening on the grassy lawn of the Festival grounds with a picnic basket, bottle of wine and great friends before the show.

### LINCOLN'S BLOOMINGTON FESTIVAL

July 21-22

[www.mchistory.org](http://www.mchistory.org)

Celebrate Lincoln's legacy in Bloomington-Normal each July during the Lincoln's Bloomington Festival. Programs and activities include Civil War re-enactments, traditional craft demonstrations, children's activities, live music, talks, tours, wagon rides and carriage rides. Activities are planned in and around Downtown Bloomington and at the David Davis Mansion.

### SPRING BLOOM ARTS FESTIVAL

April 28

[www.mcac.org](http://www.mcac.org)

This indoor fine art festival kicks off the season of local art festivals each spring with 100 artists representing a wide range of media. Come for a variety of woodworking, glass art, sculpture, paintings, prints, photographs and handcrafted jewelry.

### SUGAR CREEK ARTS FESTIVAL

July 7-8

[www.mcac.org](http://www.mcac.org)

The streets of Uptown Normal are painted with artists and art lovers alike during this annual festival held each July. The festival only allows original pieces of artwork to be shown so be ready for a one-of-a-kind experience!

### SWEET CORN BLUES FESTIVAL

August 25-26

[www.normal.org](http://www.normal.org)

Sidewalk sales, arts, crafts, flea market vendors and over 50,000 ears of fresh sweet corn fill the streets of Uptown Normal each August to welcome back the students at Illinois State University. Come out and enjoy the fun, food and some of the best blues music around!



# Museums & History

Bloomington-Normal contains numerous national and state historic landmarks, many of which are listed on the National Register of Historic Places and are part of the Looking for Lincoln program or are situated along historic Route 66.

**EXPLORE OUR RICH HISTORY!**





## CHILDREN'S DISCOVERY MUSEUM

101 East Beaufort Street  
Normal, IL 61761  
309.433.3444  
[www.childrensdiscoverymuseum.net](http://www.childrensdiscoverymuseum.net)

Normal's Children's Discovery Museum is three stories of amazing hands-on fun. Families can experience the thrill of hydropower in the brand new Water Works! exhibit; explore Healthy Kids-Healthy Future, featuring the Fresh Market and Healthy Pizza Café; and for the artistic, Arts Ink features puppetry, the Imagination Theatre, a gigantic Paint Wall, Art Studio and Math in Music. Visitors won't want to miss climbing the two-story Luckey Climber, and will want to experience an array of free science activities offered daily in the Museum's Innovation Station. Explore, imagine, create and play at the Children's Discovery Museum!

## DAVID DAVIS MANSION

1000 East Monroe Drive  
Bloomington, IL 61701  
309.828.1084  
[www.daviddavismansion.org](http://www.daviddavismansion.org)  
*National Register of Historic Places*

This elegant, 36 room estate of Judge David Davis was completed in 1872 and is a model of mid-Victorian style and taste with Italianate and Second Empire architectural features. Davis, friend and mentor to Abraham Lincoln, served as a United States Supreme Court Justice and was a key contributor during Lincoln's bid for the 1860 Presidential nomination. His Bloomington home, which remained in the Davis family for three succeeding generations, provided a focal point for the social, cultural and political life of the community. The estate offers tours for both groups and individuals. Arrangements can also be made for a special Tea Ladies program at the mansion.

## EWING CULTURAL CENTER

48 Sunset Road  
Bloomington, IL 61701  
309.829.6333  
[www.ewingmanor.ilstu.edu](http://www.ewingmanor.ilstu.edu)

Ewing Cultural Center, the estate of the late Hazle Buck Ewing, is a community landmark that includes Ewing Manor, the Genevieve Green Gardens and the Theatre at Ewing which hosts the annual Illinois Shakespeare Festival. The Channel-Norman style Manor, built in 1929, serves as an event venue and hosts meetings, retreats and private events. The Manor is open for walk-in guided tours on the third Wednesday of each month from 9:00 am to 3:00 pm. Scheduled group tours may be arranged for a fee. The tour includes climbing flights of stairs to and from three levels.

## FUNK'S PRAIRIE HOME AND GEM & MINERAL MUSEUM

10875 Prairie Home Lane  
Shirley, IL 61772  
309.827.6792  
[www.funksgrove.org](http://www.funksgrove.org)

The restored 1864 residence of Lafayette Funk includes historic memorabilia and antiques of the Funk family. Lafayette Funk was an Illinois State Senator, co-founder and director of Chicago's Union Stockyards and cattle-king of Illinois. Visitors to the home will hear an original working Victrola and see the first-ever electric kitchen island. Tours of horse-drawn farm equipment, barns and some farm animals are also available. The Gem & Mineral Museum features the Hall of Gems & Minerals with its dazzling display of many rare and beautiful stones, and the Indian artifact room with early examples of Native American culture. Reservations required.



## HISTORIC NORMAL THEATER

209 West North Street  
Normal, IL 61761  
309.454.9722  
[www.normaltheater.com](http://www.normaltheater.com)  
*National Register of Historic Places*

Located in Uptown Normal, the Normal Theater originally opened in 1937 and was the first movie theater in Bloomington-Normal built specifically for sound films. An Art Deco showplace with streamline design, the Normal Theater has been completely restored to its original condition. It now operates as a film center, showing classic, independent and world cinema films on the big screen. In addition, the theater is used for a wide variety of non-film events and is available for rentals where assembly seating is required.



Indicates tours are available.



## The Greening of the Prairie

A special exhibit on

### Irish Immigration and Settlement in McLean County

March 17, 2012 through August 9, 2014  
at the



200 North Main Street  
Bloomington, IL 61701  
Phone: 309-827-0428  
[www.McHistory.org](http://www.McHistory.org)

## MCLEAN COUNTY MUSEUM OF HISTORY

200 North Main Street  
Bloomington, IL 61701  
309.827.0428  
[www.mchistory.org](http://www.mchistory.org)  
*National Register of Historic Places*

From Kickapoo Indians to early European settlers, from the small town where Lincoln practiced law to today's thriving community, the stories of this uniquely Midwestern community are told at the McLean County Museum of History. In the magnificent old Courthouse on the Downtown Bloomington square, beautiful outdoor exhibits tell of an up-and-coming Abraham Lincoln. The museum's national, award-winning exhibits feature treasures from Central Illinois families. The museum also offers many hands-on activities for children, a family history library and educational programming.

## PRAIRIE AVIATION MUSEUM

2929 East Empire Street  
Bloomington, IL 61704  
309.663.7632  
[www.prairieaviationmuseum.org](http://www.prairieaviationmuseum.org)

The Prairie Aviation Museum strives to have its visitors feel educated, entertained and inspired while providing a better perspective into the world of aviation. With a collection of preserved aircraft on display, revolving aviation exhibits and memorabilia, a 1941 Link Trainer and a miniature theater, the museum creates an environment where visitors can learn about the contributions of aviation to our community and nation. Exhibit highlights include a Bell Sea Cobra, a Huey Helicopter, an F-14 Tomcat and an A-4 Skyhawk. Come and see what wonders of flight they have to share at the family-friendly Prairie Aviation Museum.



### EMPIRE TOWNSHIP HISTORICAL MUSEUM

405 East Center Street  
LeRoy, IL 61752  
309.962.9391  
www.leroy.org

### LINCOLN'S BLOOMINGTON-NORMAL AUDIO DRIVING TOUR ②

200 N. Main Street  
Bloomington, IL 61701  
309.827.0428  
www.mchistory.org

### MATTHEW T. SCOTT HOME ②

227 North First Avenue  
Chenoa, IL 61726  
815.945.4555  
www.chenoail.org  
*National Register of Historic Places*

### MILLER PARK PAVILION & WAR MEMORIAL

1020 South Morris Avenue  
Bloomington, IL 61701  
309.434.2260  
www.bpard.org

### MT. HOPE COMMUNITY HALL & HISTORY MUSEUM

Morgan and Clinton Streets  
McLean, IL 61754  
309.287.4567

### PATTON LOG CABIN

Lexington Park District  
Lexington, IL 61753  
309.365.8779  
www.pattoncabin.yolasite.com  
*National Register of Historic Places*

### RIKE HOUSE MUSEUM ②

406 North Chestnut Street  
LeRoy, IL 61752  
309.962.2637  
www.leroy.org

### SIMPKINS WAR MUSEUM

605 East Cole Street  
Heyworth, IL 61745  
309.473.3989  
www.heyworth-il.gov

### STEVENSON GRAVES AT EVERGREEN MEMORIAL CEMETERY

302 East Miller Street  
Bloomington, IL 61701  
309.827.6950  
www.evergreen-cemetery.com

### TELEPHONE MUSEUM OF GRIDLEY

318 North Center Street  
Gridley, IL 61744  
309.747.3177  
www.telephonemuseumofgridley.org



## Route 66

### ILLINOIS ROUTE 66 SCENIC BYWAY

700 East Adams Street  
Springfield, IL 62701  
866.378.7866  
www.illinoisroute66.org

Discover why people come from around the world to travel the Mother Road. Illinois Route 66 is bursting with interesting sites, including iconic landmarks and attractions, as well as unique restaurants, shops and accommodations.

### MEMORY LANE

Along Historic Route 66  
Lexington, IL 61753  
309.365.8105  
www.illinoisroute66.org

Visitors can drive along "Memory Lane" in Lexington, a one-mile stretch of Route 66 which has been transformed into an interpretive trail, complete with restored billboards, classic business banners, original pavement and other great Mother Road memorabilia.

### MCLEAN COUNTY MUSEUM OF HISTORY

200 North Main Street  
Bloomington, IL 61701  
309.827.0428  
www.mchistory.org

The Museum features permanent and national, award-winning, rotating exhibits that explore the history of Central Illinois, and is home to a recently installed Route 66 Wayside Exhibit that tells the story of the Mother Road's great significance and impact on the community.

### SPRAGUE SUPER SERVICE STATION

305 East Pine Street  
Normal, IL 61761  
309.452.5325  
www.illinoisroute66.org

This two-story Tudor-Revival style building was built to serve the increasing traveler needs on Route 66. The station is home to a recently installed Route 66 Wayside Exhibit that tells the story of the Mother Road's great significance and impact on the community.

### "A GEOGRAPHICAL JOURNEY" PARKWAY

Along Historic Route 66  
Towanda, IL 61776  
www.towandahistory.org


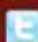
A 1.6 mile stretch of Route 66 has been turned into a geographical journey with educational kiosks interpreting each state along the road.

# It's OK to Point...We Like the Attention!

The Illinois Route 66 Scenic Byway is bursting with interesting sights, including iconic landmarks and attractions as well as unique restaurants, shops and accommodations. Explore the Illinois portion of the Mother Road - she won't scold you for pointing!

WHERE THE MOTHER ROAD BEGINS



  [www.illinoisroute66.org](http://www.illinoisroute66.org)

 ILLINOIS. MILE AFTER MAGNIFICENT MILE.

## Explore, Imagine, Create & Play!

- Three floors of **AMAZING HANDS-ON EXHIBITS** keep curious children and playful grown-ups busy and happy for hours on end!
- Don't miss our **BRAND NEW** exhibit **Water Works!** and explore the hands-on thrill of hydro power!
- The CDM is located in **UPTOWN NORMAL** with ample parking, unique shops & exciting restaurants.
- Ask about our **AWESOME** and **EASY BIRTHDAY PARTIES** and **FAMILY REUNIONS** with all the extras!



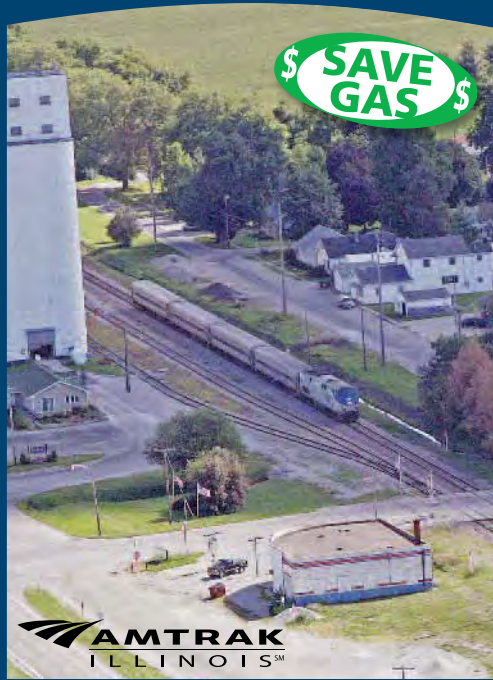
The Children's Discovery Museum  
101 E. Beaufort St., Normal, IL 61761  
[www.ChildrensDiscoveryMuseum.net](http://www.ChildrensDiscoveryMuseum.net)  
(309) 433-3444

Children's  
**Discovery**  
museum





**NORMAL**  
10 AMTRAK® TRAINS DAILY



**AMTRAK**  
ILLINOIS SM

TRAVEL MIDWEEK FOR BEST PRICES

**Amtrak.com**  
**1-800-USA-RAIL**

Amtrak and Amtrak Illinois are service marks of the National Railroad Passenger Corporation.

0382-09, 09/08 EDC

# HOMETOWN PROUD

Bloomington, Illinois. The hometown and only town where BEER NUTS® are made.



Original Peanuts  
Cashews  
Almonds  
Pecans  
Macadamia Nuts  
Insane Grain  
Bar Mix  
Jalapeno Mix  
Party Mix  
Party Coolers  
Vintage T's  
Golf Balls  
BEER NUTS T-shirts  
Baseball Hats  
Pilsner Glasses  
Deluxe Party Starter  
Pony Kegs



**company**  
**store**

103 North Robinson Street | M - F, 8 - 5  
Eastland Mall | Mall Hours  
**1.800.BEERNUTS | BEERNUTS.com**

## Holiday Inn and Suites- Bloomington Airport



Modern Guest Rooms that  
include a Refrigerator &  
Microwave

On-Site Business & Fitness  
Centers and Heated Indoor  
Pool & Hot Tub

Complimentary Shuttle Ser-  
vice within 5 Miles of the  
Hotel

Complimentary Wireless  
Internet & 24/7 IT Support  
Hotline

5000 Sq. Feet of Meeting Space  
with Catering Provided by  
Baxter's American Grille



*Located Directly Across from the Airport!*

3302 E. Empire Street • Bloomington, IL 61704  
309-662-4200 • [www.holidayinn.com/bloomingtonil](http://www.holidayinn.com/bloomingtonil)

**COULD YOUR  
BUSINESS  
USE A LITTLE  
BOOST?**

**Call the EDC to  
grow your business  
in McLean County**



ECONOMIC DEVELOPMENT COUNCIL  
OF THE BLOOMINGTON-NORMAL AREA  
*Innovating in McLean County*

**309-452-8437**

200 W College Ave., Suite 402  
Normal, IL 61761



**www.bnbiz.org**  
**Find us on Facebook!**



# Sports & Entertainment

Bloomington-Normal offers an abundance of premier sporting events and entertainment! Our stadiums and venues, including The Corn Crib and U.S. Cellular Coliseum, are filled with guests year-round enjoying live concerts, family shows, independent baseball, arena football, ice hockey, basketball and more!

**LET US ENTERTAIN YOU!**





## THE CORN CRIB

1000 West Raab Road  
Normal, IL 61761  
309.454.BALL (2255)  
[www.normalbaseball.com](http://www.normalbaseball.com)

The state-of-the-art, multi-purpose Corn Crib is the newest sports facility in Bloomington-Normal and is home to the Normal CornBelters of the independent Frontier League and Heartland Community College athletic teams. The stadium holds roughly 7,000 fans with just over 4,000 fixed seats and plenty of lawn seating. The Corn Crib's amenities include an adaptable SprintTurf playing surface, Kid Zone, 11 luxury suites, picnic area and Team Store. The Corn Crib hosts baseball, softball and soccer games, movie nights, concerts, charitable fundraisers, scout sleepovers and other CornBelters off-season events.

## UPPER LIMITS INDOOR ROCK CLIMBING GYM

1304 West Washington Street  
Bloomington, IL 61701  
309.829.8255  
[www.upperlimits.com](http://www.upperlimits.com)

Upper Limits Indoor Rock Climbing Gym has more than 20,000 square feet of climbing space, including routes up to 100 feet tall, a wave-wall, bi-level cave and a unique outdoor bouldering area. Upper Limits accommodates all ages and skill levels, offering introductory and advanced classes, parties, group rates, scout programs, team building exercises and portable walls. Come visit Upper Limits, one of the largest and tallest gyms in the world!

## U.S. CELLULAR COLISEUM

101 South Madison Street  
Bloomington, IL 61701  
309.434.2843  
[www.uscellularcoliseum.com](http://www.uscellularcoliseum.com)

The U.S. Cellular Coliseum in Downtown Bloomington has quickly become a premier venue for downstate entertainment and family recreation. The Coliseum hosts a variety of sporting events, concerts, ice shows, family shows, conferences and much more. It is also home to the Bloomington EDGE of the Indoor Football League, the Bloomington Blaze of the Central Hockey League, and the Central Illinois DRIVE of the Premier Basketball League. With over 180,000 square feet of space, the Coliseum boasts a fixed seating capacity of 8,000 for any event type.



**CORNBELTERS**  
Where dreams are made....

Grab a group of 20 or more and come catch a game at the Corn Crib!

Home of the 2012 Frontier League All-Star Game  
Presented by State Farm • July 11, 2012

- Enjoy the game in style from one of our exclusive luxury suites!
- Feast on our all you can eat/ drink "Barnyard BBQ" picnic buffet!
- Enjoy the excitement up close with discounted box seats!

**Tickets Start at only \$5!**

(309) 454-BALL (2255)  
**NORMALBASEBALL.COM**



## Event Complexes

### CHAMPION FIELDS AT MAXWELL PARK

Corner of Parkside Road and Gregory Street  
Normal, IL 61761  
309.454.9540  
softball.normal.org

### COMMUNITY SOCCER FIELDS

Corner of Ireland Grove & Towanda Barnes  
Bloomington, IL 61704  
309.451.GOAL (4625)

### EXTRA INNINGS

3 Quest Drive  
Bloomington, IL 61705  
309.827.5000  
www.extrainnings-bn.com

### GAME TIME GYM II

404 Olympia Drive  
Bloomington, IL 61704  
309.662.9520  
www.gametimegym.com

### MCLEAN COUNTY FAIRGROUNDS

1106 Interstate Drive  
Bloomington, IL 61705  
309.663.6497  
www.mcleancountyfair.org

### MCLEAN COUNTY PONY FIELDS AT THE SHIRA BASEBALL COMPLEX

3707 Ireland Grove Road  
Bloomington, IL 61704  
309.662.7669  
www.mcponybaseball.com

### PEPSI ICE CENTER

201 South Roosevelt Street  
Bloomington, IL 61701  
309.434.2737  
www.pepsiicecenter.com

## Entertainment

### CASTLE THEATRE

209 East Washington Street  
Bloomington, IL 61701  
309.820.0352  
www.thecastletheatre.com

### LAUGH

108 East Market Street  
Bloomington, IL 61701  
309.287.7698  
www.laughbloomington.com

### TREEHOUSE LOUNGE COMEDY CLUB

2060 Ireland Grove Road  
Bloomington, IL 61704  
309.662.5231

## Recreation & Sport

### AMF CIRCLE LANES BOWLING

1225 Holiday Drive  
Bloomington, IL 61704  
309.663.7402  
www.amf.com

### ARCADIA: AMERICA'S PLAYABLE ARCADE MUSEUM

107 South Hamilton Street  
McLean, IL 61754  
309.287.1725  
www.vintagevideogames.com

### CHALLENGER LEARNING CENTER

Heartland Community College  
1500 West Raab Road  
Normal, IL 61761  
309.268.8701  
www.challengerlearningcenter.com

### CHUCK'S CADDY CLUB MINIATURE GOLF AT MILLER PARK

1020 South Morris Avenue  
Bloomington, IL 61701  
309.434.2260 • 309.434.2651  
www.bpard.org

### DARNALL'S GUN WORKS & RANGES

6125 East 1175 North Road  
Bloomington, IL 61705  
309.379.4331  
www.darnalls.com

### GRADY'S FAMILY FUN PARK

1501 Morrissey Drive  
Bloomington, IL 61701  
309.662.3333  
www.gradysfunpark.com

### ILLINOIS COACHES ASSOCIATION GOLF HALL OF FAME

502 West Hamilton Road  
Bloomington, IL 61704  
309.434.2217  
www.icacoach.org



### **ISU BOWLING & BILLIARDS CENTER**

ISU Bone Student Center  
Normal, IL 61790  
309.438.2555  
[www.bsc.ilstu.edu/bowling-billiards](http://www.bsc.ilstu.edu/bowling-billiards)

### **ISU PLANETARIUM**

ISU Felmley Hall of Science  
Normal, IL 61790  
309.438.8756  
[www.phy.ilstu.edu/~trw/planet.html](http://www.phy.ilstu.edu/~trw/planet.html)

### **PHEASANT LANES FAMILY FUN CENTER**

804 North Hershey Road  
Bloomington, IL 61704  
309.663.8556  
[www.pheasantlanes.net](http://www.pheasantlanes.net)

### **RIDE THE NINE BILLIARDS**

503 North Prospect Road  
Bloomington, IL 61704  
309.662.1009

### **SKATE 'N PLACE ROLLER SKATING**

1704 South Morris Avenue  
Bloomington, IL 61701  
309.828.8931

### **SUDDEN IMPACT PAINTBALL**

7290 East 550 North Road  
McLean, IL 61704  
309.874.3338  
[www.sipaintball.net](http://www.sipaintball.net)

### **URBAN WARFARE INDOOR PAINTBALL FACILITY**

14088 Prairie Commercial Park  
Bloomington, IL 61704  
309.261.2596  
[www.paintballurbanwarfare.com](http://www.paintballurbanwarfare.com)

## **Movie Theaters**

### **CAPEN AUDITORIUM**

Illinois State University-Edwards Hall  
Normal, IL 61790  
309.438.8814  
[www.programboard.ilstu.edu](http://www.programboard.ilstu.edu)

### **GALAXY 14 CINEMA**

1111 Wylie Drive  
Bloomington, IL 61705  
309.828.8081  
[www.wehrenberg.com](http://www.wehrenberg.com)

### **NORMAL THEATER**

209 West North Street  
Normal, IL 61761  
309.454.9722  
[www.normaltheater.com](http://www.normaltheater.com)

### **PALACE 10 CINEMA**

415 Detroit Drive  
Bloomington, IL 61704  
309.661.2452  
[www.carmike.com](http://www.carmike.com)

### **STARPLEX CINEMAS**

201 McKnight Street  
Normal, IL 61761  
309.454.1373  
[www.starplexcinemas.com](http://www.starplexcinemas.com)

## **Horseback Riding**

### **DOUBLE L OUTFITTERS LLC**

Moraine View State Park  
LeRoy, IL 61752  
309.724.8500  
[www.lloutfitters.com](http://www.lloutfitters.com)

### **RASPBERRY GROVE EQUESTRIAN CENTER**

14148 North 900 East Road  
Bloomington, IL 61705  
309.829.3150  
[www.equi-coach.com](http://www.equi-coach.com)

## **Workout Facilities**

### **ANYTIME FITNESS**

- 3907 G.E. Road  
Bloomington, IL 61704  
309.662.0999
- 1710 Bradford Lane  
Normal, IL 61761  
309.452.9695  
[www.anytimefitness.com](http://www.anytimefitness.com)

### **CHARTER FITNESS**

1500 East Empire Street  
Bloomington, IL 61701  
309.663.0602  
[www.charterfitness.com](http://www.charterfitness.com)

### **CROSSFIT BLOOMINGTON-NORMAL**

401 Bronco Drive  
Bloomington, IL 61704  
309.662.5678  
[www.crossfitbloomingtonnormal.com](http://www.crossfitbloomingtonnormal.com)

### **GOLD'S GYM**

11 Currency Drive  
Bloomington, IL 61704  
309.661.GOLD (4653)  
[www.goldsgym.com](http://www.goldsgym.com)

### **GOLD'S GYM EXPRESS**

1503 East College Avenue  
Normal, IL 61761  
309.451.4653  
[www.goldsexpress.com](http://www.goldsexpress.com)

### **ISU STUDENT FITNESS CENTER**

Corner of Main & Hale Street  
Normal, IL 61790  
309.438.7529  
[www.campusrecreation.ilstu.edu](http://www.campusrecreation.ilstu.edu)

### **THE WORKOUT COMPANY**

419 Kays Drive  
Normal, IL 61761  
309.454.2582  
[www.theworkoutcompany.org](http://www.theworkoutcompany.org)

### **YMCA**

602 South Main Street  
Bloomington, IL 61701  
309.827.6233  
[www.bnymca.org](http://www.bnymca.org)

### **YWCA**

1201 North Hershey Road  
Bloomington, IL 61704  
309.662.0461  
[www.ywcamclean.org](http://www.ywcamclean.org)

**HEARTS  
at HOME**

The Go-To Place for Moms



**NATIONAL CONFERENCE**  
ILLINOIS STATE UNIVERSITY  
**MARCH 16-17, 2012**  
309.828.MOMS  
[www.hearts-at-home.org](http://www.hearts-at-home.org)

# Agritourism

For one-of-a-kind, hands-on educational agritourism experiences, visit Bloomington-Normal! Be ready to enjoy the Funk's Grove Pure Maple Sirup operation, observe working farms from Illinois State University, Rader Family and Ropp Jersey Cheese, unwind during a scenic stroll through the Genevieve Green Gardens and relax in the White Oak Vineyards' tasting room with a glass of wine.

## EXPERIENCE THE OUTDOORS!





## GENEVIEVE GREEN GARDENS

48 Sunset Road  
Bloomington, IL 61701  
309.829.6333  
[www.ewingmanor.ilstu.edu](http://www.ewingmanor.ilstu.edu)

The Genevieve Green Gardens at Ewing Cultural Center are a place of serenity and retreat amidst the hustle of a thriving and robust Illinois community. Created in honor of Genevieve Carlock Green by her husband, the late Bruce V. Green, the gardens celebrate the seasons of Central Illinois and exhibits species native to the area. The gardens' walkways, plantings and other amenities offer a relaxing setting for contemplation and the appreciation of nature's beauty. The Genevieve Green Gardens are free and open to the public for self-guided tours every day from 8:00AM until dusk. Special gardening programs are also available and offered year-round for groups.

## ILLINOIS STATE UNIVERSITY FARM

25578 ISU Farm Lane  
Lexington, IL 61753  
309.365.2211  
[www.agriculture.ilstu.edu/farm](http://www.agriculture.ilstu.edu/farm)

The Illinois State University Farm is a teaching, research and demonstration farm, consisting of 360 acres in Lexington and 250 acres in Normal. Current enterprises at the University Farm include corn, soybeans, alfalfa, swine, beef and sheep. The farm is primarily an educational tool for agriculture and agribusiness majors at Illinois State University, and works with a number of seed and chemical companies on field crop research. Group tours can be booked by visiting the website or by contacting the farm manager.

## MILLER PARK ZOO

1020 South Morris Avenue  
Bloomington, IL 61701  
309.434.2250  
[www.millerparkzoo.org](http://www.millerparkzoo.org)

Miller Park Zoo offers many exhibits and zookeeper interaction opportunities the whole family will enjoy. Zoo inhabitants include a Sumatran tiger, river otter, Galapagos tortoise, snow leopard, sun bear, reindeer, sea lion, red pandas, lemurs, bald eagles, pallas cats and red wolves. The Zoo features many large indoor and outdoor exhibits such as the Tropical American Rainforest, ZooLab, Katthoefer Animal Building, Wallaby WalkAbout, Children's Zoo and Animals of Asia. On a relaxing stroll through Miller Park Zoo, visitors are sure to be surprised by the mammals, reptiles and beautiful free flying birds spotted along the way. The Miller Park Zoo offers educational classes, special events, group programs and daily feedings to the sea lion, river otter, tiger, leopard, gibbons and bear.



## RADER FAMILY FARMS

1238 Ropp Road  
Normal, IL 61761  
309.275.8765  
[www.raderfamilyfarms.com](http://www.raderfamilyfarms.com)

This seasonal farm is open from mid-September through October 31st each year. Attractions inside the farm include The Pumpkin Blossom Café and Gift Shoppe, Harvest Brew coffee shop, picnic area and a variety of produce including pumpkins, gourds, mums, straw bales, Indian corn, corn stalks, honey, cider, apples, Kettle Korn and more. Activity admission includes access to the jumping pillow, school house education barn, little toddler village, giant mountain slide, climbing straw castle, corny bins, cattle chute jump, rodeo round-up, big digger sandbox, real tractor experience, tractor-pulled family hayrack rides, caterpillar and lady bug train rides for kids, farm animals in the little barnyard, weekend face painting and live music!

## ROPP JERSEY CHEESE FARM

2676 Ropp Road  
Normal, IL 61761  
309.452.3641  
[www.roppcheese.com](http://www.roppcheese.com)

The Ropp Jersey Cheese processing facility in north Normal is owned and operated by a family of 6th generation McLean County dairy farmers. The facility produces cheese curds as well as artisan cheddars, colbys and other cheeses. The Ropp family opened this facility to help promote agriculture as a vital industry to American life and they invite groups to tour the farm and learn first-hand how fine quality cheeses are made. Guests of the farm can explore the grounds, pet the purebred prize-winning Jersey calves and take a look through the Ropp Jersey Cheese retail store which features a cheese slicing room with viewing windows.



Indicates tours are available.



## TWIN GROVES WIND FARM ☺

13682 North 2900 East Road  
Ellsworth, IL 61737  
309.724.8278  
[www.edpr.com](http://www.edpr.com)

EDP Renewables North America LLC and its subsidiaries develop, construct, own and operate wind farms throughout North America. EDPR NA has developed more than 3,700 megawatts (MW) and operates over 3,500 MW of wind farms, including the Twin Groves Wind Farm located in the wind-swept Bloomington Moraine in eastern McLean County. The Twin Groves Wind Farm offers 396 MW of affordable, pollution-free wind energy, enough to meet the annual energy needs of about 118,000 homes. Groups of ten or more can learn more about the facility with a guided tour that begins at the Twin Groves Lookout Visitor Area.

## WHITE OAK VINEYARDS, INC. ☺

8621 East 2100 North Road  
Carlock, IL 61725  
309.376.3027  
[www.whiteoakvineyardsinc.com](http://www.whiteoakvineyardsinc.com)

McLean County's newest vineyard and only winery, White Oak Vineyards, grows twelve grape varieties on 9.5 acres, and presently features a tasting list of ten wines. A log home on the property has been remodeled into the winery and tasting room with a comfortable, warm and inviting atmosphere perfect for gatherings with family and friends. The wrap around porch offers lovely views of the vineyards, pond and surrounding countryside. White Oak Vineyards hosts entertainment, special events and group tours, and is pleased to share their passion for wine, love of the land and love for their German heritage.

## ECOLOGY ACTION CENTER

202 West College Avenue  
Normal, IL 61761  
309.454.3169  
[www.ecologyactioncenter.org](http://www.ecologyactioncenter.org)

## EVERGREEN LAKE AT COMLARA COUNTY PARK

13001 Recreation Area Drive  
Hudson, IL 61748  
309.434.6770  
[www.mcleancountyil.gov/parks](http://www.mcleancountyil.gov/parks)

## FUNK'S GROVE PURE MAPLE SIRUP

5257 Old Route 66  
Shirley, IL 61772  
309.874.3360  
[www.funksmaplesirup.com](http://www.funksmaplesirup.com)

## GRAND VILLAGE OF THE KICKAPOO PARK

750 North 3100 East Road  
LeRoy, IL 61752  
309.287.0044  
[www.grandvillage.org](http://www.grandvillage.org)

## SUGAR GROVE NATURE CENTER

4532 North 725 East Road  
McLean, IL 61754  
309.874.2174  
[www.sugargrovenaturecenter.org](http://www.sugargrovenaturecenter.org)

## TIMBER POINTE OUTDOOR CENTER

20 Timber Pointe Lane  
Hudson, IL 61748  
309.365.8021  
[www.ci.easterseals.com](http://www.ci.easterseals.com)





## BLOOMINGTON-NORMAL

320 South Towanda Avenue | Normal, IL 61761-2212

Ph: 309.452.8900 | Fx: 309.452.8933

1.800.HAMPTON | WWW.HAMPTONINNNORMAL.COM

Email: BMNL\_Hampton\_Suites@hilton.com



- Complimentary "On the House" Breakfast
- Complimentary Wireless High-Speed Internet
- "Cloud 9" Bedding Experience
- Lobby "Suite Shop"
- Indoor Pool/Spa/Fitness Center
- State-of-the-Art Meeting Rooms available for up to 70 people
- Check out our virtual tour online at: [www.ihlive.com/Hampton/BloomingtonIL](http://www.ihlive.com/Hampton/BloomingtonIL)

**Located at The Shoppes @ College Hills**



SHOPPES AT

**COLLEGE  
HILLS**

*Central Illinois' Finest  
Outdoor Shopping Experience!*



The Shoppes at College Hills is an open-air lifestyle center anchored by Von Maur, Hobby Lobby, Gordmans and Target. Specialty and fashion retailers include Armed Forces Career Center, The Back Store, Bath & Body Works, Beauty Brands, Chico's, The Children's Place, Coldstone Creamery, Coldwater Creek, Colorific, Dress Barn, Enterprise Rent-A-Car, FlatTop Grill, J Jill, Joe's Stationhouse Pizza Pub, Jos A Bank, Lane Bryant, Loft, Motherhood Maternity, Panda Express, Portrait Innovations, Soma Intimates, Starbucks, Tuesday Morning, The Digital Store, Vitamin World, and Yankee Candle.



# Golf Guide



## THE DEN AT FOX CREEK

3002 Fox Creek Road  
Bloomington, IL 61704  
309.434.2300  
www.thedengc.com



## HIGHLAND PARK GOLF COURSE

1613 South Main Street  
Bloomington, IL 61701  
309.434.2200  
www.highlandparkgc.com



## IRONWOOD GOLF COURSE

1901 Towanda Avenue  
Normal, IL 61761  
309.454.9620  
www.golfironwood.org



## THE LINKS AT IRELAND GROVE

3807 Ballybunion Road  
Bloomington, IL 61704  
309.661.8040  
www.thelinksatirelandgrove.com

Holes	PAR	Course Yardage	Cart Rental	Driving Range	Pro Shop/ Club Rental
-------	-----	----------------	-------------	---------------	-----------------------

18	72	6,926			
----	----	-------	--	--	--

This Arnold Palmer Signature Golf Course features bentgrass tees, greens and fairways that complement the wild prairie grasses which group in the rough. This picturesque Scottish Links Style golf course features 131 strategically placed sand traps, and water hazards on 9 of the 18 holes.

18	70	5,539			
----	----	-------	--	--	--

This course offers narrow fairways lined by old, mature trees and small greens which make for a challenging round. A hilly terrain and beautiful, meandering creek make this a very scenic golf course.

18	72	7,100			
----	----	-------	--	--	--

Designed by highly regarded golf course designer Roger Packard, the Ironwood Golf Course meanders through the Ironwood residential subdivision. Additional features include a grass tee driving range, large practice putting green, practice bunker and instruction for golfers of all ages at the Golf Academy at Ironwood.

9	30	1,590			
---	----	-------	--	--	--

In addition to the nine-hole course, The Links at Ireland Grove offers a range with weather protected hitting bays, over an acre of target greens, several bunkers, two fairways, nearly two acres of natural grass hitting area and rental clubs.





## PRAIRIE VISTA GOLF COURSE

502 West Hamilton Road  
Bloomington, IL 61704  
309.434.2217  
[www.prairievistagc.com](http://www.prairievistagc.com)



## WEIBRING GOLF CLUB AT ISU

800 West Gregory Street  
Normal, IL 61790  
309.438.8065  
[www.isugolf.com](http://www.isugolf.com)

## HAZY HILLS GOLF COURSE

25258 North 1350 East Road  
Hudson, IL 61748  
309.726.9200

## INDIAN SPRINGS GOLF CLUB

37180 East Comanche Drive  
Saybrook, IL 61770  
309.475.4111  
[www.golfatindiansprings.com](http://www.golfatindiansprings.com)

## THE GOLF LEARNING CENTER

1304 Cross Creek Drive  
Normal, IL 61761  
309.829.4653  
[www.allseasonsglc.com](http://www.allseasonsglc.com)

Holes	PAR	Course Yardage	Cart Rental	Driving Range	Pro Shop/Club Rental
-------	-----	----------------	-------------	---------------	----------------------

18	72	6,745			
----	----	-------	--	--	--

The American Contemporary Style course, designed by Roger Packard, features bentgrass tees, greens, fairways and water hazards on 16 of the 18 holes. Other amenities include a large practice putting green, large practice chipping green and a grass driving range.

18	71	6,915			
----	----	-------	--	--	--

Extensively renovated in 2000, the course now accommodates approximately 28,000 rounds per year and hosts more than 100 tournaments and outings. Weibring Golf Club features 18 rebuilt greens and two practice greens, bentgrass tees and fairways, Bunker Guard erosion control and tour-quality Best Sand.

9	35	2,900			
---	----	-------	--	--	--

The nine-hole course at the Hazy Hills Golf Course in Hudson was designed by Ben Gildersleeve. The design of the holes, rolling terrain and pond give this course character and add to its charm.

9	36	3,180			
---	----	-------	--	--	--

This course features a challenging, tree-lined layout with two sets of tees. The practice facilities include an oversized putting green with a side bunker and a full length driving range. Outings, playdays and banquets are welcome but must be scheduled in advance.

Named to Golf Range Magazine's Top 100 Ranges in America, the center offers both indoor and outdoor facilities, a full flight driving range, 35 heated hitting bays and two heated teaching bays. Lessons and a Full Swing Indoor Golf Simulator are available.

Join us for an annual tradition that's  
fun for all ages and skill levels!



June 25-27, 2012  
[www.countryyouthclassic.com](http://www.countryyouthclassic.com)





# Dining & Nightlife

## AVANTI'S ITALIAN RESTAURANT

- 407 South Main Street, Normal, IL 61761 • 309.452.4436
- 3302 East Empire Street, Bloomington, IL 61704 • 309.662.4436

Avanti's Italian Restaurant was established in Normal in 1971 and is known for their home style pasta, pizza, salads and sandwiches. Avanti's trademark however, is fresh Italian bread which is prepared and baked in the restaurant kitchen. Avanti's has long been an institution for Illinois State University students and faculty, and the restaurant frequently welcomes second generation guests and staff members. The staff and management are experienced professionals who understand how to prepare and serve steaming hot, delicious Italian meals and fresh bread in a clean, comfortable atmosphere. Avanti's Italian Restaurant provides a very rare combination of homelike surroundings and high quality food.

## D.P. DOUGH CALZONES

121 East Beaufort Street, Normal, IL 61761 • 309.888.9663

D.P. Dough is located in the heart of Uptown Normal, specializing in calzones, the pizza alternative. Try the Titan with pepperoni, pineapple, pesto and mozzarella or the Reggie with pepperoni, sausage and mozzarella; they're hometown favorites! D.P. Dough's delicious menu is offered for dine-in, carry-out, fast delivery or catering.

## THE GARLIC PRESS MARKET CAFÉ

108 West North Street, Normal, IL 61761 • 309.452.0987

What sets The Garlic Press Market Café apart from the rest is their diverse and changing menu, which features seasonal, locally grown and organic ingredients. The Café also offers a diverse selection of carefully chosen specialty cheeses, both imported and domestic, to please all kinds of palettes.

## LANCASTER'S FINE DINING

513 North Main Street, Bloomington, IL 61701 • 309.827.3333

Lancaster's serves a fusion-style cuisine in a casually sophisticated setting, providing appetizers and main courses for every taste. Steak, seafood and pasta selections are reasonably priced and delicious. Finish your meal with flaming crème brûlée, flourless chocolate cake or famous Bananas Foster.

## MEDICI

120 West North Street, Normal, IL 61761 • 309.452.6334

Medici in Normal takes great pride in its unique design and delicious food. A 30-foot Mulberry tree graces the atrium of the restaurant, reflecting the owner's passion for forestry. Medici also features an outdoor patio and its bar offers the largest selection of domestic microbrews in Bloomington-Normal.

## RED OAK COMFORT FOOD & PIE CO.

405 North Main Street, Bloomington, IL • 309.828.3292

For over 40 years, Red Oak Comfort Food & Pie Co. has delighted appetites with sensational Swedish-American cuisine. Home-baked pies, hand-churned ice cream, casseroles, meatballs and lasagnas, bread puddings and other time honored recipes are the reasons visitors have made Red Oak Comfort Food & Pie Co. a dining tradition for themselves, their families and their friends. Red Oak Comfort Food & Pie Co. recently relocated their luncheon room to Downtown Bloomington, and converted their Bishop Hill location into a production facility. Diners can now pick up their delicious comfort food, have it personally delivered or enjoy a scrumptious meal in the new luncheon room.





## American Cuisine

### ALETA JANE'S CAFE

803 Morrissey Drive, Bloomington  
309.829.0936

### APPLEBEE'S BAR & GRILL

502 North Veterans Parkway, Bloomington  
309.663.2134

### BAXTERS AMERICAN GRILLE

3212 East Empire Street, Bloomington  
309.662.1114

### BIG DADDYS DAWGS

120 Krispy Kreme Drive, Bloomington  
309.662.3300

### BOB EVANS

- 801 IAA Drive, Bloomington • 309.663.5131
- 2115 West Market Street, Bloomington  
309.829.5595

### BOO BOO'S DAWGHOUSE

- 116 West Washington Street, Bloomington  
309.820.7788
- 3907 G.E. Road, Bloomington • 309.661.0877

### BREWE HA'S

102 South Linden Street, Normal  
309.452.7393

### BUFFALO WILD WINGS

3220 East Empire Street, Bloomington  
309.661.8027

### THE CABOOSE

608 West Seminary Avenue, Bloomington  
309.829.7895

### CJ'S RESTAURANT & CATERING

2901 East Empire Street, Bloomington  
309.663.4444

### CRACKER BARREL

502 Brock Drive, Bloomington • 309.829.3155

### DENNY'S

- 701 Eldorado Road, Bloomington • 309.663.5251
- 1615 North Main Street, Normal • 309.452.7446

### DESTIHL

318 South Towanda Avenue, Normal  
309.862.2337

### FORT JESSE CAFE

1531 Fort Jesse Road, Normal • 309.454.7223

### GARDEN OF PARADISE

1412 East Empire Street, Bloomington  
309.828.8080

### THE GARLIC PRESS MARKET CAFÉ

108 West North Street, Normal • 309.452.0987

### GILL STREET SPORTS BAR & RESTAURANT

3002 Gill Street, Bloomington • 309.661.6387

### HOOTERS

409 North Hershey Road, Bloomington  
309.663.4668

### IHOP

2109 East Empire Street, Bloomington  
309.662.8895

### JESSE'S GRILLE

201 Broadway Avenue, Normal • 309.862.9000

### JET STREAM BURGER BAR

3201 CIRA Drive, Bloomington • 309.662.4845

### KELLER'S IRON SKILLET

609 South Hannah Street, Bloomington  
309.828.3533

### KEP'S COUNTRY KITCHEN

506 IAA Drive, Bloomington • 309.664.2260

### LANCASTER'S FINE DINING

513 North Main Street, Bloomington  
309.827.3333

### LEGENDS SPORTS BAR & GRILL

712 South Eldorado Road, Bloomington  
309.661.8800

### MAIN STREET GRILL

517 North Main Street, Bloomington  
309.820.9241

### MEATHEADS BURGERS & FRIES

- 305 North Veterans Parkway, Bloomington  
309.661.8866
- 701 South Main Street, Normal • 309.451.3535

### MEDICI

120 West North Street, Normal • 309.452.6334

### MERRY ANN'S DINER

100 South Fell Avenue, Normal • 309.452.1100

### MICHAEL'S RESTAURANT

110 West Washington Street, Bloomington  
309.820.1330

### MR. BEEZ' ATRIUM PUB

1413 Leslie Drive, Bloomington • 309.665.3999

### NATE'S DINER

304 North Main Street, Normal • 309.454.9200

### NOODLES & COMPANY

- 609 South Main Street, Normal • 309.454.3900
- 305 North Veterans Parkway, Bloomington  
309.661.6300

### **OZARK HOUSE**

704 South McGregor Street, Bloomington  
309.827.3900

### **PARK VIEW INN**

1003 South Morris Avenue, Bloomington  
309.827.4280

### **REALITY BITES**

414 North Main Street, Bloomington  
309.828.1300

### **RED LOBSTER**

714 Eldorado Road, Bloomington  
309.663.9405

### **RED OAK COMFORT FOOD & PIE CO.**

405 North Main Street, Bloomington  
309.828.3292

### **THE ROCK RESTAURANT**

203 West North Street, Normal • 309.451.4976

### **ROSIE'S**

106 East Front Street, Bloomington  
309.827.7019

### **SCHOONER'S**

810 East Grove Street, Bloomington  
309.829.6841

### **SHANNON'S FIVE STAR**

1305 South Mercer Avenue, Bloomington  
309.664.0808

### **STATION 220**

220 East Front Street, Bloomington  
309.828.2323

### **STEAK 'N SHAKE**

- 1802 South Veterans Parkway, Bloomington  
309.661.9204
- 1001 Wylie Drive, Bloomington • 309.828.2222
- 325 South Veterans Parkway, Normal  
309.454.2899
- 614 West Raab Road, Normal • 309.451.3721

### **SUPER GYROS**

- 115 Susan Drive, Normal • 309.452.4046
- 1709 South Veterans Parkway, Bloomington  
309.661.0834
- 1750 Bradford Lane, Normal • 309.862.1111

### **SWINGERS GRILLE**

1304 Cross Creek Drive, Normal • 309.829.5777

### **T.G.I. FRIDAY'S**

9 Brickyard Drive, Bloomington • 309.662.2231

### **TIMES PAST INN**

1216 Towanda Avenue, Bloomington  
309.828.8312

### **UNCLE TOM'S PANCAKE HOUSE**

1700 Fredrick Lane, Normal • 309.862.3614

### **WILD BERRIES**

115 South Veterans Parkway, Normal  
309.452.1000

### **WINDY CITY WIENERS**

106 East Beaufort Street, Normal  
309.452.2900

### **ZORBAS RESTAURANT**

603 Dale Street, Normal • 309.452.1449

## **Asian & Indian Cuisine**

### **BING'S WOK**

1540 East College Avenue, Bloomington  
309.888.9028

### **BONA FIDE THAI CUISINE**

1500 East Empire Street, Bloomington  
309.664.6272

### **CHINA STAR**

- 2402 East Oakland Avenue, Bloomington  
309.663.4580
- 616 West Raab Road, Normal • 309.451.1888

### **FIRST WOK**

1415 North Main Street, Bloomington  
309.821.0039

### **FLAT TOP GRILL**

307 South Veterans Parkway, Normal  
309.454.1300

### **FUJI JAPANESE STEAKHOUSE**

321 South Veterans Parkway, Normal  
309.862.2668

### **GOLDEN DRAGON**

111 West Monroe, Bloomington • 309.821.9797

### **THE GRAND CAFE**

615 North Main Street, Bloomington  
309.828.0324

### **THE GREAT WALL**

1520 East College Avenue, Normal  
309.454.7218

### **HAYASHI**

7 Currency Drive, Bloomington • 309.664.5090

### **HIBACHI GRILL & SUPREME BUFFET**

1407 North Veterans Parkway, Bloomington  
309.663.1155

### **HOT WOK**

401 North Veterans Parkway, Bloomington  
309.663.5300

### **IMPERIAL BUFFET**

1950 East College Avenue, Normal  
309.454.4848

### **JADE GARDEN**

1101 North Main Street, Normal • 309.452.3006

### **KOBE JAPANESE BBQ**

Eastland Mall, Bloomington • 309.664.7700

### **KOBE JAPANESE STEAKHOUSE**

401 North Veterans Parkway, Bloomington  
309.663.1300

### **LITTLE INDIA**

503 North Prospect Road, Bloomington  
309.664.6342

### **LUCKY GARDEN**

706 South Eldorado Road, Bloomington  
309.663.1333

### **MANDARIN GARDEN HOUSE**

106 South Mall Drive, Normal • 309.454.1118

### **MING'S RESTAURANT**

407 North Hershey Road, Bloomington  
309.663.2883

### **ORIENT GOURMET**

2103 North Veterans Parkway, Bloomington  
309.661.1868

### **PANDA EXPRESS**

- Eastland Mall, Bloomington • 309.663.5904
- 312-1 South Veterans Parkway, Normal  
309.451.1269

### **PURAN INDIAN RESTAURANT**

1704 Eastland Drive, Bloomington  
309.663.0885

### **RED SUN**

2205 East Oakland Avenue, Bloomington  
309.661.7885

### **THAI HOUSE**

805 Morrissey Drive, Bloomington  
309.828.2600

### **YEN CHING EXPRESS**

1514 West Market Street, Bloomington  
309.827.5561

## **Bagels, Bakeries & Coffee Houses**

### **BAGELMEN'S**

1503 East Vernon Avenue, Bloomington  
309.663.8200

### **BARNES & NOBLE CAFE**

1701 East Empire Street, Bloomington  
309.662.1506

### **BEVANDE COFFEE SHOP**

- 1209 Towanda Avenue, Bloomington  
309.661.1119
- 2200 Fort Jesse Road, Normal • 309.452.9211

### **CAFFEINA'S CAFE & DESSERT BAR**

201 Broadway Avenue, Normal • 309.862.9000

### **THE COFFEE DEPOT**

104 West Front Street, Bloomington  
309.828.3376





#### COFFEE HOUND

- 407 North Main Street, Bloomington  
309.827.7575
- 205 West North Street, Normal • 309.454.7575

#### THE COFFEE HOUSE & DELI

- 114 East Beaufort Street, Normal  
309.452.6774

#### COFFEE NATION

- 3907 G.E. Road, Bloomington • 309.662.6370

#### DENNY'S DOUGHNUTS

- 1107 South Main Street, Bloomington  
309.827.0459

#### DUNKIN' DONUTS

- 2306 East Oakland Avenue, Bloomington  
309.662.2622

#### FUSION BREW

- 503 South Main Street, Normal • 309.454.9300

#### GLORIA JEAN'S GOURMET COFFEE

- Eastland Mall, Bloomington • 309.662.2550
- 1609 Northbrook Drive, Normal • 309.808.1328

#### GREAT HARVEST BREAD COMPANY

- 1704 Eastland Drive, Bloomington  
309.662.8500

#### GROVE STREET BAKERY

- 812 East Grove Street, Bloomington  
309.827.0270

#### JANET'S CAKES & CATERING

- 504 Guido Circle, Bloomington • 309.664.0684

#### JAVA JO'Z COFFEE, SMOOTHIES & MORE

- 1525 Fort Jesse Road, Normal • 309.862.3330

#### KELLY'S BAKERY & CAFE

- 113 North Center Street, Bloomington  
309.820.1200

#### KRISPY KREME DOUGHNUTS

- 201 North Veterans Parkway, Bloomington  
309.664.7400

#### MARKET STREET BAKERY

- 1401 West Market Street, Bloomington  
309.829.7200

#### PANERA BREAD COMPANY

- 208 North Greenbriar Drive, Normal  
309.454.8666
- 1401 South Veterans Parkway, Bloomington  
309.662.0336

#### STARBUCKS COFFEE

- 101 North Veterans Parkway, Bloomington  
309.662.9950
- 307 South Veterans Parkway, Normal  
309.454.2915
- 1550 East College Avenue, Normal  
309.452.7475
- 1701 South Veterans Parkway, Bloomington  
309.663.4042

#### TAILWINDS BAR & BISTRO

- 3201 CIRA Drive, Bloomington • 309.663.9822

#### TIERS DESIGNER CAKES

- 115 Susan Drive, Normal • 309.454.5500

## Barbecued Cuisine

#### BANDANA'S BAR-B-Q

- 502 IAA Drive, Bloomington • 309.662.7427

#### FAMOUS DAVE'S

- 1603 Morrissey Drive, Bloomington  
309.664.0044

#### LONGHORN SMOKEHOUSE

- 5 Currency Drive, Bloomington • 309.661.0433

## Fast Food

#### A&W

- 2501 East Oakland Avenue, Bloomington  
309.663.1823
- Eastland Mall, Bloomington • 309.664.0350

#### ARBY'S

- 1240 East Empire Street, Bloomington  
309.829.2041
- 1808 West Market Street, Bloomington  
309.829.6214
- 610 West Raab Road, Normal • 309.454.5501

#### BURGER KING

- 1601 Clearwater Avenue, Bloomington  
309.662.8315
- 1801 South Veterans Parkway, Bloomington  
309.662.5285
- 1617 North Main Street, Normal • 309.451.8844

#### CULVER'S

- 901 North Hershey Road, Bloomington  
309.662.7070
- 1807 West Market Street, Bloomington  
309.827.3527

#### DAIRY QUEEN

- 1528 East College Avenue, Normal  
309.454.5850
- 1718 South Main Street, Bloomington  
309.827.6432
- 411 North Veterans Parkway, Bloomington  
309.662.4446

#### GREAT STEAK & POTATO CO.

- Eastland Mall, Bloomington • 309.662.2214



ITALIAN RESTAURANT

**AVANTI'S™**

AVANTI'S  
1971 • 2011  
**40**  
ITALIAN RESTAURANT

**DINE IN 11am  
CARRYOUT &  
DELIVERY 10:30am  
OPEN 7 DAYS A WEEK  
CATERING**

Banquet room now available  
at our Bloomington location.

**HOME OF THE  
FAMOUS GONDOLA™**  
SANDWICHES | PIZZA  
PASTA DINNERS

407 S. MAIN | NORMAL, IL  
**309.452.4436** | [AVANTISNORMAL.COM](http://AVANTISNORMAL.COM)

3302 E. EMPIRE | BLOOMINGTON, IL  
**309.662.4436** | [AVANTISBLOOMINGTON.COM](http://AVANTISBLOOMINGTON.COM)

#### HARDEE'S/RED BURRITO

- 1523 East College Avenue, Normal  
309.454.5420
- 2702 East Oakland Avenue, Bloomington  
309.662.3023

#### KFC

- 501 Prospect Road, Bloomington • 309.662.4613
- 1706 West Market Street, Bloomington  
309.829.8932

#### KFC/A&W

- 1113 North Main Street, Normal • 309.452.6565

#### LONG JOHN SILVER'S

- 2501 East Oakland Avenue, Bloomington  
309.663.1823

#### MCDONALD'S

- 525 Brock Drive, Bloomington • 309.829.8613
- 1610 East Empire Street, Bloomington  
309.663.8450
- 2410 South Main Street, Bloomington  
309.828.1616
- 2507 East Oakland Avenue, Bloomington  
309.662.3114
- 1535 East College Avenue, Normal  
309.454.4141
- 804 South Main Street, Normal • 309.452.4023
- 1607 North Main Street, Normal • 309.862.2277

#### POPEYES LOUISIANA KITCHEN

- 1803 West Market Street, Bloomington  
309.829.7988
- 2005 East Empire Street, Bloomington  
309.662.6547

#### SONIC

- 302 Greenbriar Drive, Normal • 309.660.2218

#### TACO BELL

- 1702 West Market Street, Bloomington  
309.827.0590

- 1527 East College Avenue, Normal  
309.454.7576

#### TACO JOHN'S

- 1525 South Main Street, Bloomington  
309.828.4336

#### WENDY'S

- 1600 East College Avenue, Normal  
309.452.0200
- 1522 West Market Street, Bloomington  
309.829.3826
- 1735 Bradford Lane, Normal • 309.888.4101

## Italian Cuisine & Pizza

#### AVANTI'S ITALIAN RESTAURANT

- 407 South Main Street, Normal • 309.452.4436
- 3302 East Empire Street, Bloomington  
309.662.4436

#### BENINGO'S RESTAURANT

- 610 West Chestnut Street, Bloomington  
309.829.1025

#### BIAGGI'S RISTORANTE ITALIANO

- 1501 North Veterans Parkway, Bloomington  
309.661.8322

#### CAFFÉ ITALIA RISTORANTE

- 511 Chancellor Drive, Bloomington  
309.662.0100

#### CHICAGO STYLE PIZZERIA

- 1500 East Empire Street, Bloomington  
309.663.9566

#### CHUCK E. CHEESE'S

- 1701 East Empire Street, Bloomington  
309.664.2982



### **DOMINO'S PIZZA**

- 2205 East Oakland Avenue, Bloomington  
309.665.0505
- 305 West Beaufort Street, Normal  
309.454.5111

### **D.P. DOUGH CALZONES**

121 East Beaufort Street, Normal, IL 61761  
309.888.9663

### **FAZOLI'S**

215 Greenbriar Drive, Normal • 309.452.7700

### **FIREHOUSE PIZZA**

107 East Beaufort Street, Normal  
309.808.1597

### **FLINGERS PIZZA & PUB**

608 North Main Street, Bloomington  
309.820.8838

### **GOGO PIZZA**

1520 East College Avenue, Normal  
309.451.4646

### **GRADY'S PIZZA**

1501 Morrissey Drive, Bloomington  
309.662.3333

### **GUMBY'S PIZZA**

712 Kingsley Street, Normal • 309.454.8629

### **JOE'S STATION HOUSE PIZZA PUB**

305 South Veterans Parkway, Normal  
309.452.5637

### **LA GONDOLA**

- 509 South Main Street, Bloomington  
309.828.4141
- 1501 Vernon Avenue, Bloomington  
309.664.6363

### **LITTLE CAESARS**

- 2210 North Cottage Avenue, Bloomington  
309.821.1111
- 2507 Oakland Avenue, Bloomington  
309.661.0808

### **LUCCA GRILL**

116 East Market Street, Bloomington  
309.828.7521

### **MONICAL'S PIZZA**

- 718 South Eldorado Road, Bloomington  
309.662.8502
- 2103 North Veterans Parkway, Bloomington  
309.662.6933
- 1219 South Main Street, Normal  
309.454.7999

### **OLIVE GARDEN**

1701 East Empire Street, Bloomington  
309.663.7375

### **PAPA JOHN'S**

- 602 Kingsley Street, Normal • 309.454.7272
- 1407 North Veterans Parkway, Bloomington  
309.662.4422

### **PAPA MURPHY'S TAKE N' BAKE**

- 1531 East College Avenue, Normal  
309.452.7575
- 2402 East Oakland Avenue, Bloomington  
309.662.9000

### **PIZZA HUT**

- 1917 South Main Street, Bloomington  
309.827.4646
- 1601 East College Avenue, Normal  
309.888.4990
- 1501 North Main Street, Normal • 309.454.2491

### **PRIMETIME PIZZA**

122 East Beaufort Street, Normal  
309.888.9999

### **ROSATI'S PIZZA**

- 203 North Prospect Road, Bloomington  
309.661.6575
- 1720 Bradford Lane, Normal • 309.888.4949

### **SBARRO**

Eastland Mall, Bloomington • 309.662.9669

### **STOLFA'S PIZZA**

1002 North Linden Street, Bloomington  
309.828.2328

### **TOBIN'S PIZZA**

1513 North Main Street, Bloomington  
309.828.0410

## **Mexican Cuisine**

### **CARLOS O'KELLY'S MEXICAN CAFE**

2105 North Veterans Parkway, Bloomington  
309.662.9747

### **CHILI'S BAR & GRILL**

2107 North Veterans Parkway, Bloomington  
309.663.8060

### **CHIPOTLE MEXICAN GRILL**

- 701 South Main Street, Normal • 309.862.0309
- 305 North Veterans Parkway, Bloomington  
309.661.7850

### **EL TORO MARGARITA ISLAND**

3805 Ballybunion Road, Bloomington  
309.661.2500

### **ERIC'S RESTAURANT**

903 West Wood Street, Bloomington  
309.828.5588

### **FIESTA RANCHERA**

- 1500 East Empire Street, Bloomington  
309.663.1615
- 2103 North Veterans Parkway, Bloomington  
309.665.0170
- 1041 JC Parkway, Bloomington • 309.820.7320

### **HERRADURA**

909 North Hershey Road, Bloomington  
309.662.3961

### **LA BAMBA**

- 129 East Beaufort Street, Normal  
309.452.2243
- 108 West Washington Street, Bloomington  
309.829.5096

### **LA CARNICERIA MEXICANA**

1416 South Main Street, Bloomington  
309.827.8904

### **LOS POTRILLOS**

201 Landmark Drive, Normal • 309.862.0824

### **MOE'S SOUTHWEST GRILL**

1730 Bradford Lane, Normal • 309.862.6637

### **QDOBA**

1505 North Veterans Parkway, Bloomington  
309.661.0747

### **TAQUERIA EL PORTON**

901 North Main Street, Bloomington  
309.820.1625

## **Subs & Delis**

### **BLIMPIE SUBS & SALADS**

2109 North Veterans Parkway, Bloomington  
309.663.0279

### **BOCATA FRESH GRILL**

706 South Main Street, Normal • 309.452.3700

### **JIMMY JOHN'S GOURMET SANDWICHES**

- 2301 East Washington Street, Bloomington  
309.664.6800
- 203 West Market Street, Bloomington  
309.828.3300
- 207 West North Street, Normal  
309.452.8200
- 305 South Main Street, Normal • 309.451.1800

### **POTBELLY SANDWICH WORKS**

- 609 South Main Street, Normal  
309.862.4850
- 101 North Veterans Parkway, Bloomington  
309.662.9299

### **QUIZNOS**

1700 East College Avenue, Normal  
309.452.1212

### **REGGIE'S PREMIUM SANDWICHES**

114 East Beaufort Street, Normal  
309.888.9393

### **SCHLOTZSKY'S DELI**

508 IAA Drive, Bloomington • 309.663.6364

### **SUBWAY**

- 2310 East Oakland Avenue, Bloomington  
309.663.0029
- 1005 North Main Street, Bloomington  
309.829.2466
- 1905 West Market Street, Bloomington  
309.828.9927



- 1601 South Main Street, Bloomington  
309.820.7827
- 1602 Glasson Street, Bloomington  
309.662.4239
- Eastland Mall, Bloomington • 309.662.5173
- 1420 Airport Road, Bloomington  
309.664.3900
- 109 West Jefferson Street, Bloomington
- 1519 East College Avenue, Normal  
309.454.5600
- 300 North Greenbriar Drive, Normal  
309.888.9500
- 1715 North Bradford Lane, Normal  
309.454.1024

## Sweets & Treats

### BASKIN-ROBBINS

2306 East Oakland Avenue, Bloomington  
309.662.2622

### BEER NUTS, INC.

- 103 North Robinson Street, Bloomington  
800.BEERNUTS • 309.827.8580
- Eastland Mall, Bloomington • 309.662.1919

Ever wonder about the success story behind America's Favorite Nuts? It's a history that began back in 1937 when Arlo Shirk and his father, Edward, purchased a small confectionery store in Downtown Bloomington and the unique sweet and salty recipe for "Jumbo Red Skins." Today, BEER NUTS, Inc. products include a wide range of nuts and snack variety mixes produced at a single 100,000 square foot manufacturing facility in Bloomington under the direction of the next generation of the Shirk family with a continued commitment to quality and freshness. Visitors should be sure to stop at one of two local BEER NUTS Company Stores.

### CARL'S ICE CREAM

- 601 West Locust Street, Bloomington  
309.828.7732
- 1700 West College Avenue, Normal  
309.454.7732

### CHILL-OUT

116 West North Street, Normal • 309.585.2163

### THE CHOCOLATIER

514 North Main Street, Bloomington  
309.821.0277

### COLD STONE CREAMERY

301 South Veterans Parkway, Normal  
309.888.2606

### COOKIES BY DESIGN

1520 East College Avenue, Normal  
309.452.8439

### EMACK & BOLIO'S

107 East Beaufort Street, Normal  
309.454.9375

### FANNIE MAY

Eastland Mall, Bloomington • 309.663.0585

### GENE'S ICE CREAM

1019 South Main Street, Bloomington  
309.829.6022

### GROVE STREET BAKERY

812 East Grove Street, Bloomington  
309.827.0270

### JUICE FRESCO

Eastland Mall, Bloomington • 309.664.6060

### MRS. FIELDS COOKIES

Eastland Mall, Bloomington • 309.663.8231

### PRETZEL MAKER

Eastland Mall, Bloomington • 309.662.5232

### PRETZEL TWISTER

Eastland Mall, Bloomington • 309.664.5522

### QUENCHER SMOOTHIES

Eastland Mall, Bloomington • 309.661.0690

### ROCKY MOUNTAIN CHOCOLATE FACTORY

101 North Veterans Parkway, Bloomington  
309.662.8610

### SMOOTHIE KING

- 2205 East Oakland Avenue, Bloomington  
309.662.0865
- 1608 Northbrook Drive, Normal • 309.862.1575

## Steakhouses

### ALEXANDER'S STEAKHOUSE

1503 East College Avenue, Normal  
309.454.7300

### JIM'S STEAK HOUSE

2307 East Washington Street, Bloomington  
309.663.4142

### LOGAN'S ROADHOUSE

313 South Veterans Parkway, Normal  
309.452.7100

### LONE STAR STEAK HOUSE & SALOON

903 IAA Drive, Bloomington • 309.663.7827

### OUTBACK STEAKHOUSE

1409 North Veterans Parkway, Bloomington  
309.663.0455



# Bars & Nightlife

## A. RENÉE

306 North Center Street, Bloomington  
309.827.3524

## A&P TAP

721 West Chestnut Street, Bloomington  
309.828.5581

## THE BISTRO

316 North Main Street, Bloomington  
309.829.2278

## BLUE LINE NIGHT CLUB

602 North Main Street, Bloomington  
309.585.2641

## BONKER'S PLACE

1507 South Main Street, Bloomington  
309.827.5822

## C II EAST LOUNGE

102 South East Street, Bloomington  
309.828.0431

## CHASERS

110 West Washington Street, Bloomington  
309.820.1330

## CHEEKS BAR & GRILL

1206 Towanda Avenue, Bloomington  
309.829.3655

## COPPER TOP LOUNGE

1107 West Locust Street, Bloomington  
309.828.9932

## DADDIOS

527 North Main Street, Bloomington  
309.828.4434

## DIGGERS

230 East Front Street, Bloomington  
309.829.3757

## DRIFTERS PUB

612 North Main Street, Bloomington  
309.829.1920

## ELROY'S

102 West Washington Street, Bloomington  
309.828.0142

## ENTOURAGE

909 North Hershey Road, Bloomington  
309.661.6301

## FAT JACK'S

511 North Main Street, Bloomington  
309.821.9222

## ILLINOIS BREWING CO.

102 North Center Street, Bloomington  
309.829.2805

## JESSE'S GRILLE LOUNGE

201 Broadway Avenue, Normal • 309.862.9000

## KEGLER'S PUB

804 North Hershey Road, Bloomington  
309.663.8556

## KILLARNEY'S

523 North Main Street, Bloomington  
309.828.1186

## THE LOFT MARTINI BAR

220 East Front Street, Bloomington  
309.828.8464

## LUNKER'S

104 South Linden Street, Normal • 309.451.3474

## MAGGIE MILEY'S

126 East Beaufort Street, Normal  
309.807.4301

## MAGUIRE'S PUB

220 North Center Street, Bloomington  
309.829.0002

## MUGSHOTS

107 West Front Street, Bloomington  
309.829.2337

## MUGSY'S PUB

1310 North Main Street, Bloomington  
309.827.2628

## MULLIGANS

531 North Main Street, Bloomington  
309.827.7796

## PUB I

505 West Market Street, Bloomington  
309.829.9924

## PUB II

102 North Linden Street, Normal  
309.452.0699

## ROSIE'S

106 East Front Street, Bloomington  
309.827.7019

## SCHOONERS

810 East Grove Street, Bloomington  
309.829.6841

## SHOOTER'S LOUNGE

503 North Prospect Road, Bloomington  
309.662.1009

## SIX STRINGS

525 North Center Street, Bloomington  
309.829.9977

## WINDJAMMER LOUNGE

2303 Stern Drive, Bloomington  
309.663.2233

## WINNER'S LOUNGE

801 South Main Street, Bloomington  
309.828.2238

## YANKEE DOODLE

1407 Morrissey Drive, Bloomington  
309.662.8332

**From A to Z** WE KNOW HOW TO ROCK  
**BLOOMINGTON-NORMAL**

**U.S. CELLULAR COLISEUM**  
101 S. MADISON ST.  
BLOOMINGTON, IL 61701  
309-434-2843

**TICKETS AVAILABLE AT:**  
800.745.3000 | Ticketmaster.com | select Walmart locations | U.S. Cellular Coliseum Box Office  
**WWW.USCELLULARCOLISEUM.COM**

**Jason Aldean** **ZZ TOP**

# Shopping

Bloomington-Normal is a great place to shop! Eastland Mall and the Shoppes at College Hills offer the finest retail shops and specialty stores in Central Illinois. Looking for something more unique? The streets of Downtown Bloomington and Uptown Normal are filled with antique stores, bookstores, salons, boutiques and one-of-a-kind, locally-owned businesses. Visitors will be sure to find exactly what they're looking for in Bloomington-Normal!

**SHOP HERE!**





## EASTLAND MALL

1615 East Empire Street  
Bloomington, IL 61701  
309.663.1340  
www.ishopeastlandmall.com

Eastland Mall is a family friendly indoor mall that is sure to please everyone with a wide variety of stores, activities, food and entertainment. Visitors will find great shopping at stores like American Eagle, Bergner's, Buckle, Hollister, JC Penney, Kohl's, Limited, Macy's, Old Navy, Sears, Talbot's, Ulta and more. The food court includes A&W, Great Steak & Potato Co., Kobe Japanese, Panda Express, Quenchers Smoothies, Sbarro and Subway. Other specialty snack shops including BEER NUTS, Fannie May and Gloria Jean's Coffees are located throughout the mall. Eastland Mall recently welcomed a D&R Plumbing, Heating & Air Play Area to the Macy's wing.

## THE SHOPPES AT COLLEGE HILLS

North Veterans Parkway  
Normal, IL 61761  
309.862.3761  
www.theshoppesatcollegehills.com

The Shoppes at College Hills is an open-air lifestyle center anchored by Von Maur, Gordman's, Hobby Lobby and Target. The exciting blend of retailers and restaurants includes more than 25 specialty stores like Beauty Brands, Coldwater Creek, Chico's, J. Jill, Loft, Jos A. Bank and Soma Intimates. Many restaurants are also located at the Shoppes at College Hills, including DESTIHL, Flat Top Grill, Panda Express, Joe's Station House Pizza Pub and Cold Stone Creamery. The shopping center features inviting landscaping, a state-of-the-art water feature, seating areas, children's play area and space for outdoor dining.



### GIVE MORE

There's nothing like finding the perfect gift, except for finding 10 perfect gifts.

RT. 9 & VETERANS PARKWAY | 309.663.1340  
ISHOPEASTLANDMALL.COM

**E**  
EASTLAND MALL  
A GREAT SHOPPING PLACE

## Stores & Shopping Plazas

### AUTO ROW PLAZA

1 Auto Row Drive  
Bloomington, IL 61704  
Major Tenants: Golf Discount, Pier One

### BLOOMINGTON COMMONS

1701 East Empire Street  
Bloomington, IL 61701  
Major Tenants: Schnucks, Toys R Us, Barnes & Noble, Chuck E. Cheese's

### COLONIAL PLAZA

1500 East Empire Street  
Bloomington, IL 61701  
Major Tenants: Kmart, Office Max, Michaels

### CONSTITUTION TRAIL CENTRE

1750 Bradford Lane  
Normal, IL 61761  
Major Tenants: Schnucks, Dollar Tree

### EASTLAND COMMONS

401 North Veterans Parkway  
Bloomington, IL 61704  
Major Tenants: Men's Wearhouse, Cub Foods

### NORTH VETERANS & COLLEGE

1700 East College Avenue  
Normal, IL 61761  
Major Tenants: Office Depot, Bed Bath & Beyond, Dick's Sporting Goods, Petco, The Fresh Market

### THE PARKWAY

2103 North Veterans Parkway  
Bloomington, IL 61704  
Major Tenants: TJ Maxx, Best Buy, Jewel-Osco

### SHOPPES AT CORPORATE COMMONS

1 Krispy Kreme Drive  
Bloomington, IL 61704  
Major Tenants: Complete Nutrition, Starbucks, Krispy Kreme, Rocky Mountain Chocolate Factory

### WAL-MART SUPERCENTERS

- 300 North Greenbriar Drive  
Normal, IL 61761  
309.451.1100
- 2225 West Market Street  
Bloomington, IL 61705  
309.828.5646



# Downtown Bloomington

## DOWNTOWN BLOOMINGTON ASSOCIATION

106 West Monroe Street  
Bloomington, IL 61701  
309.829.9599  
[www.downtownbloomington.org](http://www.downtownbloomington.org)

With its masterful blend of historic architecture and contemporary shops and residences, the Downtown Bloomington square invites visitors to explore! A short walk in any direction will lead guests to points of discovery.

Visitors will have no problem finding an imported bottle of wine, one-of-a-kind work of art, rare book, priceless antique or the best cup of coffee they've ever had. Downtown Bloomington boasts dozens of specialty retailers including Specs Around Town, offering the most unique eyewear and accessories in Central Illinois. A day Downtown should also include some pampering at the Fox & Hounds Studio & Day Spa, a delicious meal, first-class entertainment and end with a visit to a night spot. It's all in Downtown Bloomington!

Downtown Bloomington is home to the nationally recognized Farmers' Market, as well as a variety of exciting events which occur on the First Friday evening of every month. Those events include spring's Tour de Chocolat and Area Artist Showcase, autumn's Around the Corner Art Walk and winter's Live Holiday Window Vignettes. Plan some Down time today!



## DOWNTOWN BLOOMINGTON FARMERS' MARKET

May-October  
Downtown Bloomington  
[www.downtownbloomington.org](http://www.downtownbloomington.org)  
309.829.9599

## FIRST FRIDAYS

January-December  
Downtown Bloomington  
[www.downtownbloomington.org](http://www.downtownbloomington.org)  
309.829.9599



# DOWNTOWN BLOOMINGTON

Plan some DOWN time...



## RETAIL

1. A Gridley Antiques
2. A. Renée
3. The Bead Parlor
4. Beck's Family Florist
5. Bedtime Boutique
6. Bill's Key & Lock Shop
7. Bobzbay
8. Burpo's Boutique
9. CVS Pharmacy
10. Chocolatier
11. Churchill's Formal Wear
12. City Consignments
13. Colley's Chess Café
14. Common Ground Grocery
15. Crazy About Scrubs
16. Creative Cotton Screen Printing
17. Crossroads Handcrafts of the World
18. GiGi Bottega
19. Global Tobacco Inc.
20. Gryfalia's Aerie
21. Hobbyland
22. Johnston's Skating and Hockey Pro Shop
23. Koldaire Equipment
24. Kramer's Drapery & Fabric Outlet
25. M&M Flooring of Bloomington

26. MusiCenterR
27. Neighborhood Thrift Store
28. Pars Rug Gallery
29. Penelope's
30. Pouquette's
31. Smoker's Den
32. Specs Around Town
33. Stained Glass Designs
34. Timothy Kent Gallery & Framing

## RESTAURANTS & CAFÉS

1. Boo Boo's Dawg House
2. Coffee Hound
3. Flingers Pizza and Pub
4. Golden Dragon Restaurant
5. Grand Café
6. Jimmy John's Gourmet Sandwiches
7. Kelly's Bakery and Café
8. LaBamba
9. Lancaster's Fine Dining
10. Lucca Grill
11. Main Street Grill
12. Michael's Restaurant / Chasers
13. Reality Bites
14. The Red Oak Comfort Food and Pie Co.
15. Rosie's
16. Station 220 / The Loft

## ARTS & ENTERTAINMENT

1. Around the Corner Art Group
2. Bloomington Center for the Performing Arts
3. The Castle Theatre
4. Eaton Studio and Gallery
5. Gregor Gallery
6. Main Gallery 404
7. cometogetherstudios
8. McLean County Arts Center
9. Merlot And A Masterpiece
10. Michael Dubina & Thursday Gervais Art Studios
11. Monroe Building Studios Angel Ambrose Fine Art Studio Darin Dawdy Art Studio Jeff Little Studio Joann Goetzing Studio
12. TheatresCool
13. U.S. Cellular Coliseum
14. Wings Studio

## SERVICES

1. Adkins Pilates
2. Aneumatic Tattoo
3. Bodyworks Therapeutic Massage
4. Bryant Miller Salon

5. Center for Healing and Wellness
6. Commerce Bank
7. The Copy Shop
8. Downtown Bloomington Assoc. / Downtown Information Center
9. Exquisite Body Piercing & Tattoos
10. Fox & Hounds Hair Studio and Day Spa at the Monroe Centre
11. girl Friday spa & boutique
12. The Great Display Company
13. Heartland Bank
14. Immortal Ink
15. Kamokunani Hula Halau
16. The Launch Pad
17. Main Street Yoga (2 locations)
18. Mavidea Technology Group
19. Mink's Memorial Model Raceway
20. PNC Bank
21. Old House Society Salvage Whs.
22. Osborn & DeLong
23. The Pantagraph
24. Paul's Upholstery
25. Percy's Tailor Shop
26. Psychopathic Ink
27. Roxanna & Co.

28. Second Presbyterian Church
29. Tatum's Hair Studio
30. Vicki Tilton, LLC Permanent Cosmetic Technician
31. Vogel's Tailor Shop

## NIGHTLIFE

1. The Bistro
2. BlueLine Nightclub
3. CII East
4. Daddios
5. Diggers Again
6. Drifters
7. Elroy's
8. Fat Jack's
9. Illinois Brewing Company
10. Killarney's Irish Pub
11. Laugh Comedy Club
12. Maguire's Pub
13. Mugshots
14. Mulligans
15. Six Strings

## COMMUNITY

1. Bloomington Public Library
2. City Hall
3. Government Center
4. McLean County Museum of History
5. Pepsi Ice Center



# Uptown Normal

## UPTOWN NORMAL RENEWAL OFFICE

108 East Beaufort Street  
Normal, IL 61761  
309.454.9556  
[www.uptownnormal.com](http://www.uptownnormal.com)

Now is the time to visit Uptown Normal! It is easy to spend an entire day discovering the district's one-of-a-kind locally owned businesses including Babbitt's Books and the Garlic Press, the three-story Children's Discovery Museum and Discover More! Store, and Historic Normal Theatre. Plus, the brand new, full-service Marriott Hotel & Conference Center can accommodate events of all sizes or a family for a quick weekend getaway!

Plenty of parking and the new roundabout makes visiting Uptown by car a breeze. Located just steps from the Normal Amtrak Station and the community's multipurpose Constitution Trail, Uptown is also very easy to access by train or bicycle.

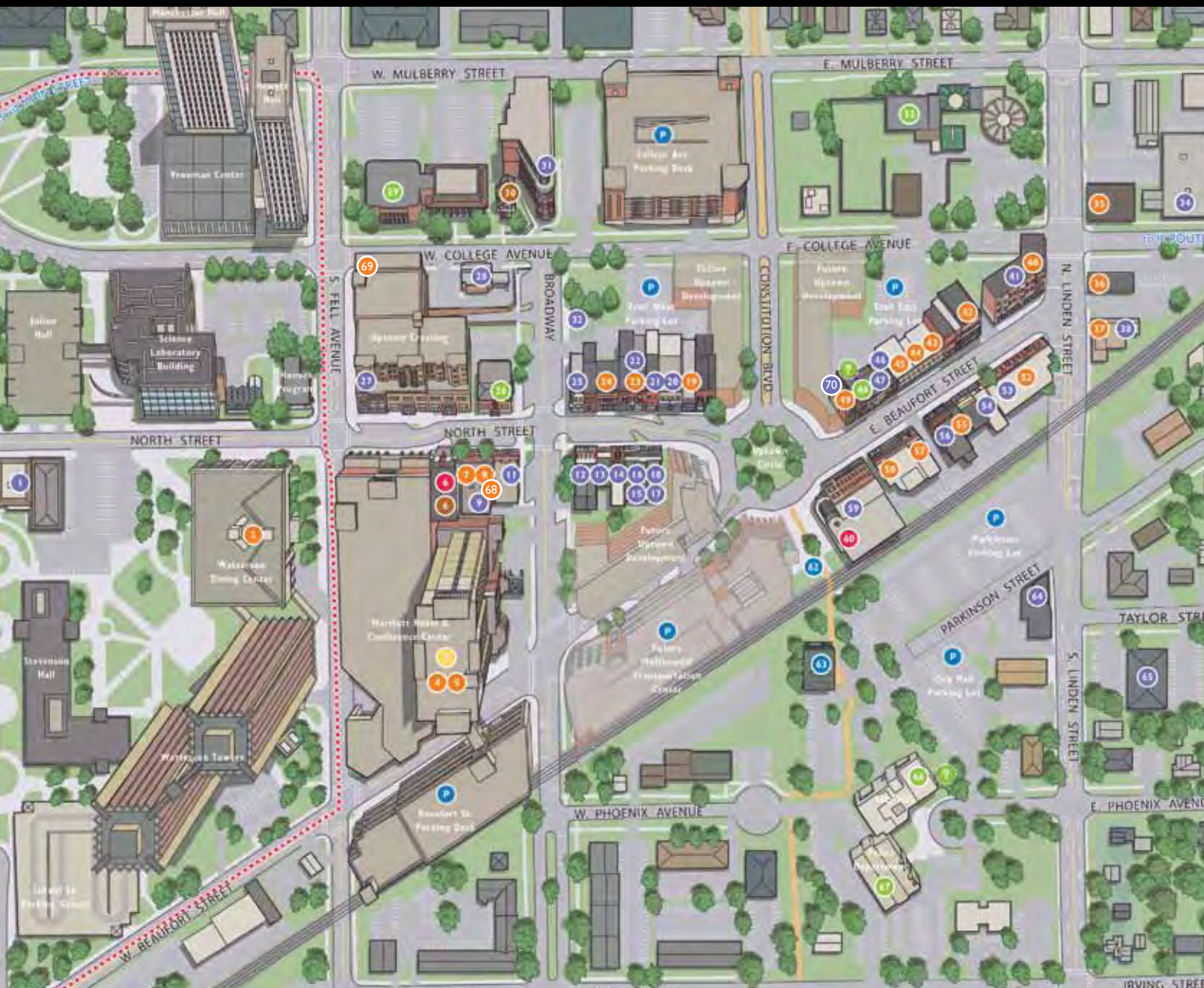
Uptown Normal is a place for everyone. Residents and visitors alike will find plenty to enjoy in Uptown, and there is always something new to experience in the district. Seasonal events like the Sweet Corn Blues Festival and the Sugar Creek Arts Festival, one of the region's largest juried art shows, draw thousands of visitors to the area each spring and summer. Uptown Normal invites you to visit old favorites and discover new ones today!



## UPTOWN NORMAL TRAILSIDE MARKET

June-September  
Uptown Normal  
[www.uptownnormal.com](http://www.uptownnormal.com)  
309.454.9556





# UPTOWN NORMAL

Changing the definition!

## SHOPPING / SERVICES

- 34. ACE HARDWARE
- 16. ACME COMICS
- 46. ADVANCED ELECTRONICS
- 1. ALAMO II
- 21. ARTKORE TATTOOS
- 56. BABBITT'S BOOKS
- 54. BILL'S KEY & LOCK
- 28. BUSEY BANK
- 11. C. TEES
- 12. CAMPUS TOWN SUPPLY
- 32. COMMERCE BANK
- 27. CVS PHARMACY
- 59. DISCOVER MORE! STORE
- 38. C.I.S.A.R THRIFT SHOP
- 47. FABULOUS AFFAIRS
- 41. FIRST SITE
- 20. GARLIC PRESS
- 53. GUITAR WORLD
- 31. HEARTLAND BANK
- FARNSWORTH GROUP

## DINING

- BURWOOD GROUP
- ECONOMIC DEVELOPMENT COUNCIL
- 17. MOTHER MURPHY'S / SHOCKWAVES
- 14. NORTH ST. RECORDS
- 9. SHORTY'S BARBERSHOP
- 25. SOLID GOLD JEWELERS
- 13. VICTOR'S ALTERATIONS
- 65. VITESSE CYCLE SHOP / OFTEN RUNNING /BUDGET LIQUORS
- 22. UPTOWN GIFTS & ACCESSORIES
- 15. WAITING ROOM RECORDS
- 18. WASHBURN FLOWERS
- 64. WILD COUNTRY
- 70. THE POD
- 36. BREW-HA'S
- 5. CAFFEINA'S
- 8. COFFEE HOUND
- 45. COFFEE HOUSE
- 40. COSI
- 55. DP DOUGH
- 58. EMACK & BOLIO'S
- 57. FIREHOUSE PIZZA AND PUB
- 19. GARLIC PRESS MARKET CAFE
- 4. JESSE'S GRILL
- 7. JIMMY JOHN'S

- 52. LA BAMBA
- 37. LUNKERS
- 42. MAGGIE MILEY'S IRISH PUB
- 24. MEDICI
- 23. CHILL OUT YOGURT
- 43. PRIME TIME PIZZA
- 35. PUB II
- 44. REGGIE'S SANDWICHES
- 2. WATTERSON FOOD COURT
- 49. WINDY CITY WIENERS
- 68. THE ROCK RESTAURANT
- 69. MERRY ANN'S DINER

## MUNICIPAL

- 26. POST OFFICE
- 66. CITY HALL
- 29. NORMAL PUBLIC LIBRARY
- 67. POLICE STATION
- 48. UPTOWN RENEWAL OFFICE
- 33. TOWN OF NORMAL WATER FACILITY

## HOTELS/LODGING

- 3. BLOOMINGTON-NORMAL MARRIOTT HOTEL & CONFERENCE CENTER

## ENTERTAINMENT

- 60. CHILDREN'S DISCOVERY MUSEUM
- 6. NORMAL THEATER

## TRANSPORTATION

- 63. AMTRAK STATION
- 62. CONSTITUTION TRAIL

## LANDMARKS

- 6. NORMAL THEATER
- 30. ECOLOGY ACTION CENTER



NORTH

CONSTITUTION TRAIL

ISU BOUNDARY

P PARKING

I INFORMATION





# Annual Events

## January

### **ILLINOIS FISH & FEATHER EXPO**

January 27-29  
McLean County Fairgrounds  
309.425.9646  
[www.illinoisfishandfeather.com](http://www.illinoisfishandfeather.com)

## February

### **IHSA COMPETITIVE CHEERLEADING STATE FINALS**

February 3-4  
U.S. Cellular Coliseum  
309.663.6377  
[www.ihsa.org](http://www.ihsa.org)

### **LINCOLN'S BIRTHDAY CELEBRATION**

February 12  
David Davis Mansion  
309.828.1084  
[www.daviddavismansion.org](http://www.daviddavismansion.org)

### **IHSA GIRLS CLASS 1A & 2A BASKETBALL STATE FINALS**

February 23-25  
ISU Redbird Arena  
309.663.6377  
[www.ihsa.org](http://www.ihsa.org)

### **IHSA DUAL TEAM WRESTLING STATE FINALS**

February 25  
U.S. Cellular Coliseum  
309.663.6377  
[www.ihsa.org](http://www.ihsa.org)

## March

### **IHSA GIRLS CLASS 3A & 4A BASKETBALL STATE FINALS**

March 1-3  
ISU Redbird Arena  
309.663.6377  
[www.ihsa.org](http://www.ihsa.org)

### **MILLER PARK ZOO STAMPEDE**

March 3  
Miller Park Zoo  
309.434.2243  
[www.millerparkzoo.org](http://www.millerparkzoo.org)

### **25th ANNUAL BLOOMINGTON-NORMAL AREA HOME SHOW**

March 9-11  
U.S. Cellular Coliseum  
309.663.6612  
[www.bnhomebuilders.com](http://www.bnhomebuilders.com)

### **AMERICAN PASSION PLAY**

March 10, 17, 24, 25 & 31  
Bloomington Center for the Performing Arts  
800.354.9640  
[www.americanpassionplay.org](http://www.americanpassionplay.org)

### **HEARTS AT HOME NATIONAL CONFERENCE**

March 16-17  
Illinois State University  
309.828.MOMS  
[www.hearts-at-home.org](http://www.hearts-at-home.org)

### **SPECIAL OLYMPICS STATE BASKETBALL TOURNAMENT**

March 16-18  
ISU Redbird Arena & IWU Shirk Center  
309.888.2551  
[www.ilso.org](http://www.ilso.org)

## April

### **ILLINOIS SUSTAINABLE LIVING & WELLNESS EXPO**

April 14  
Illinois Wesleyan University  
309.454.3169  
[www.islwe.org](http://www.islwe.org)



### **HANDS ALL AROUND QUILT GUILD ANNUAL QUILT SHOW**

April 14-15  
IWU Shirk Center  
800.433.8226  
<http://haaqg.tripod.com/quiltshow.htm>

### **76th ANNUAL GAMMA PHI CIRCUS**

April 20-21  
Illinois State University  
309.438.2690  
[www.gammaphicircus.ilstu.edu](http://www.gammaphicircus.ilstu.edu)

### **SPRING BLOOM ARTS FESTIVAL**

April 28  
McLean County Fairgrounds  
309.829.0011  
[www.mcac.org](http://www.mcac.org)

### **ILLINOIS WESLEYAN UNIVERSITY GRADUATION**

April 29  
Illinois Wesleyan University  
309.556.1000  
[www.iwu.edu/commencement](http://www.iwu.edu/commencement)

## **May**

### **THIRD SUNDAY MARKET**

May-October  
McLean County Fairgrounds  
217.202.2847  
[www.thirdsundaymarket.com](http://www.thirdsundaymarket.com)

### **AREA ARTIST SHOWCASE**

May 4-5  
Downtown Bloomington  
309.828.9500  
[www.maingallery404.com](http://www.maingallery404.com)

### **31st ANNUAL LAKE RUN**

May 5  
Lake Bloomington  
309.825.1162  
[www.lakerunclub.org](http://www.lakerunclub.org)

### **RED CARPET CORRIDOR FESTIVAL**

May 5-6  
Towanda, IL  
309.728.2811  
[www.towandail.org](http://www.towandail.org)

### **ILLINOIS STATE UNIVERSITY GRADUATION**

May 11-12  
Illinois State University  
309.438.2836  
[www.commencement.ilstu.edu](http://www.commencement.ilstu.edu)

### **LINCOLN COLLEGE NORMAL GRADUATION**

May 12  
ISU Center for the Performing Arts  
309.268.4902  
[www.lincolncollege.edu/normal](http://www.lincolncollege.edu/normal)

### **HEYWORTH HEYDAYS**

May 17-20  
Downtown Heyworth  
309.473.2811  
[www.heyworth-il.gov/heydays](http://www.heyworth-il.gov/heydays)

### **17th ANNUAL SISTERS & FRIENDS AFROCENTRIC FINE ART SHOW**

May 19-20  
ISU Alumni Center  
309.663.4938  
[www.sistersandfriendsartshow.com](http://www.sistersandfriendsartshow.com)

### **HEART OF ILLINOIS DOG SHOW CLUSTER**

May 25-28  
McLean County Fairgrounds  
800.433.8226  
[www.cornbeltkennelclub.org](http://www.cornbeltkennelclub.org)

## **June**

### **21st ANNUAL CHAMPAGNE BRITISH CAR FESTIVAL**

June 1-3  
David Davis Mansion  
309.828.1084  
[www.daviddavismansion.org](http://www.daviddavismansion.org)

### **TRI-SHARK TRIATHLON CLASSIC**

June 2  
Comlara County Park  
309.827.2272  
[www.tri-shark.org](http://www.tri-shark.org)

### **14th ANNUAL INTERTRIBAL KICKAPOO POW WOW**

June 2-3  
Grand Village of the Kickapoo Park  
309.287.0044  
[www.grandvillage.org](http://www.grandvillage.org)

### **SPECIAL OLYMPICS ILLINOIS STATE SUMMER GAMES**

June 8-10  
Illinois State University  
309.888.2551  
[www.ilso.org](http://www.ilso.org)

### **12th ANNUAL GLT SUMMER CONCERT**

June 9  
Downtown Bloomington  
309.438.8910  
[www.wglt.org](http://www.wglt.org)

### **16th ANNUAL GLORIOUS GARDEN FESTIVAL**

June 15-16  
David Davis Mansion  
309.828.1084  
[www.daviddavismansion.org](http://www.daviddavismansion.org)

### **IBCA GIRLS ALL-STAR BASKETBALL GAME**

June 16  
IWU Shirk Center  
815.452.2903  
[www.ibcaillinois.org](http://www.ibcaillinois.org)

### **IBCA BOYS ALL-STAR BASKETBALL GAME**

June 23  
IWU Shirk Center  
815.452.2903  
[www.ibcaillinois.org](http://www.ibcaillinois.org)

### **COUNTRY YOUTH CLASSIC GOLF TOURNAMENT**

June 25-27  
Bloomington-Normal Golf Courses  
800.433.8226  
[www.countryyouthclassic.com](http://www.countryyouthclassic.com)

### **ILLINOIS SHAKESPEARE FESTIVAL**

June 28-August 11  
Ewing Cultural Center  
309.438.2535  
[www.thefestival.org](http://www.thefestival.org)

## **July**

### **ILLINOIS SHAKESPEARE FESTIVAL**

July 1-August 11  
Ewing Cultural Center  
309.438.2535  
[www.thefestival.org](http://www.thefestival.org)

### **PANTAGRAPH CELEBRATE AMERICA CONCERT**

July 4  
Miller Park Bandstand  
309.434.2260  
[www.cityblm.org](http://www.cityblm.org)

### **PARK-2-PARK 5-MILER**

July 4  
Miller Park  
309.451.9927  
[www.lakerunclub.org](http://www.lakerunclub.org)

### **4th OF JULY FIREWORKS**

July 4  
Fairview Park  
309.454.2444  
[www.normal.org](http://www.normal.org)

### **9th ANNUAL MIDWEST NATIONALS WRESTLING TOURNAMENT**

July 7  
IWU Shirk Center  
800.433.8226  
[www.midwestnationalswrestling.com](http://www.midwestnationalswrestling.com)

### **SUGAR CREEK ARTS FESTIVAL**

July 7-8  
Uptown Normal  
309.829.0011  
[www.mcac.org](http://www.mcac.org)

### FRONTIER LEAGUE ALL-STAR GAME

July 9-11  
The Corn Crib  
309.454.2255  
[www.normalbaseball.com](http://www.normalbaseball.com)

### EVERGREEN LAKE INTERNATIONAL TRIATHLON

July 14  
Comlara County Park  
309.827.2272  
[www.tri-shark.org](http://www.tri-shark.org)

### AIN'T NOTHIN' BUT THE BLUES FESTIVAL

July 20-21  
General Electric Employees Club  
800.433.8226  
[www.aintnothinbuttheblues.com](http://www.aintnothinbuttheblues.com)

### STANFORD GOOD OLD DAYS FESTIVAL

July 20-22  
Stanford, IL  
309.287.7023  
[www.stanfordil.org](http://www.stanfordil.org)

### CIVIL WAR DAYS

July 21-22  
David Davis Mansion  
309.828.1084  
[www.daviddavismansion.org](http://www.daviddavismansion.org)

### LINCOLN'S BLOOMINGTON FESTIVAL

July 21-22  
Downtown Bloomington  
800.827.0428  
[www.mchistory.org](http://www.mchistory.org)

## August

### MCLEAN COUNTY FAIR

August 1-5  
McLean County Fairgrounds  
309.663.6497  
[www.mcleancountyfair.org](http://www.mcleancountyfair.org)

### ILLINOIS SHAKESPEARE FESTIVAL

August 1-11  
Ewing Cultural Center  
309.438.2535  
[www.thefestival.org](http://www.thefestival.org)

### ANTIQUE AUTOMOBILE EXHIBIT

August 4  
David Davis Mansion  
309.828.1084  
[www.daviddavismansion.org](http://www.daviddavismansion.org)

### EVERGREEN LAKE 5K

August 11  
Comlara County Park  
800.433.8226  
[www.lakerunclub.org](http://www.lakerunclub.org)

### CULTURAL FESTIVAL

August 17-19  
Miller Park  
800.433.8226  
[www.culturalfest.com](http://www.culturalfest.com)

### DANVERS DAYS

August 17-19  
Danvers Village Park  
309.531.4442  
[www.orgsites.com/il/danvers](http://www.orgsites.com/il/danvers)

### SWEET CORN BLUES FESTIVAL

August 25-26  
Uptown Normal  
309.454.9556  
[www.uptownnormal.com](http://www.uptownnormal.com)

## September

### IESA GIRLS SOFTBALL STATE FINALS

September 21-22  
Champion Fields at Maxwell Park  
309.829.0114  
[www.iesa.org](http://www.iesa.org)

### A DAY AT THE AIRPORT

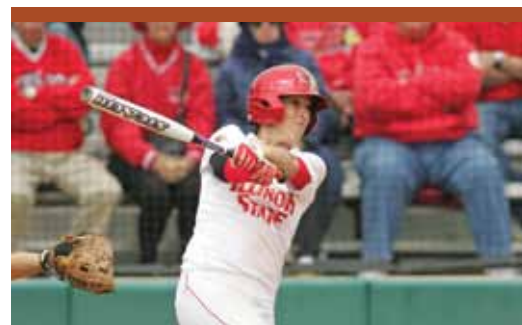
September 22  
Prairie Aviation Museum  
309.663.7632  
[www.prairieaviationmuseum.org](http://www.prairieaviationmuseum.org)

### WORLDWIDE DAY OF PLAY

September 29  
Various Bloomington-Normal sites  
309.433.3444  
[www.childrensdiscoverymuseum.net](http://www.childrensdiscoverymuseum.net)

### ILLINOIS WESLEYAN UNIVERSITY FAMILY WEEKEND

September 29-30  
Illinois Wesleyan University  
309.556.3850  
[www.iwu.edu/studentaffairs](http://www.iwu.edu/studentaffairs)



### STATE FARM ILLINOIS COLLEGIATE SOFTBALL CHAMPIONSHIP

September 29-30  
Champion Fields at Maxwell Park  
800.433.8226  
[www.bloomingtonnormalcvb.org](http://www.bloomingtonnormalcvb.org)

### EVERGREEN CEMETERY DISCOVERY WALK

September 29-October 7  
Evergreen Memorial Cemetery  
309.438.2586  
[www.mchistory.org](http://www.mchistory.org)

## October

### ILLINOIS STATE UNIVERSITY HOMECOMING

October 1-7  
Illinois State University  
309.438.2586  
[www.illinoisstatehomecoming.com](http://www.illinoisstatehomecoming.com)

### IHSA BOYS GOLF STATE FINALS

October 12-13  
Bloomington-Normal Golf Courses  
309.633.6377  
[www.ihsa.org](http://www.ihsa.org)

### IESA CROSS COUNTRY STATE FINALS

October 13  
Parkside Junior High & Maxwell Park  
309.829.0114  
[www.iesa.org](http://www.iesa.org)

## The Chateau

BLOOMINGTON  
HOTEL AND CONFERENCE CENTER



- ★ 180 Overnight Rooms
- ★ Off Site Catering
- ★ 8,000 sq ft Banquet & Meeting Space
- ★ Complimentary Wireless Internet
- ★ On Site Restaurant & Lounge
- ★ Easy access to I-55 & I-74
- ★ Indoor Pool
- ★ Free Parking

**309-662-2020**

1601 Jumer Dr.  
Bloomington, IL 61704

[www.chateauhotel.biz](http://www.chateauhotel.biz)



### **ILLINOIS WESLEYAN UNIVERSITY HOMECOMING**

October 13  
Illinois Wesleyan University  
309.556.3251  
[www.titanpride.org](http://www.titanpride.org)

### **BOO BASH**

October 20  
Children's Discovery Museum  
309.433.3444  
[www.childrensdiscoverymuseum.net](http://www.childrensdiscoverymuseum.net)

### **DOWNTOWN BLOOMINGTON TRICK OR TREAT**

October 26  
Downtown Bloomington  
309.829.9599  
[www.downtownbloomington.org](http://www.downtownbloomington.org)

### **IHSA CLASS 1A BOYS SOCCER STATE FINALS**

October 26-27  
The Corn Crib  
309.663.6377  
[www.ihsa.org](http://www.ihsa.org)

### **UPTOWN NORMAL TREAT FEAST**

October 30  
Uptown Normal  
309.454.9556  
[www.uptownnormal.com](http://www.uptownnormal.com)

### **BLESSINGS OF THE TABLE**

October 31-November 18  
David Davis Mansion  
309.828.1084  
[www.daviddavismansion.org](http://www.daviddavismansion.org)

## **November**

### **IHSA GIRLS VOLLEYBALL STATE FINALS**

November 9-10  
ISU Redbird Arena  
309.663.6377  
[www.ihsa.org](http://www.ihsa.org)

### **UPTOWN HOLIDAY OPEN HOUSE**

November 10-11  
Uptown Normal  
309.454.9556  
[www.uptownnormal.com](http://www.uptownnormal.com)

### **THANKSGIVING FARMERS MARKET**

November 17  
U.S. Cellular Coliseum  
309.829.9599  
[www.downtownbloomington.org](http://www.downtownbloomington.org)

### **33rd ANNUAL TURKEY TROT RUN**

November 22  
Miller Park  
309.434.2260  
[www.cityblm.org](http://www.cityblm.org)

### **CHRISTMAS AT CLOVER LAWN**

November 23-December 31  
David Davis Mansion  
309.828.1084  
[www.daviddavismansion.org](http://www.daviddavismansion.org)

## **December**

### **TWIN CITY BALLET'S 32nd ANNUAL NUTCRACKER**

December 1-2  
ISU Braden Auditorium  
309.663.9333  
[www.tcbdance.com](http://www.tcbdance.com)

### **CHRISTMAS AT FUNK'S PRAIRIE HOME**

December 1-31  
Funk's Prairie Home  
309.827.6792  
[www.funksgrove.org](http://www.funksgrove.org)

### **JAYCEES CHRISTMAS PARADE**

December 8  
Normal to Downtown Bloomington  
309.319.6107  
[www.bnjaycees.org](http://www.bnjaycees.org)

### **ONCE UPON A HOLIDAY**

December 8  
Downtown Bloomington  
309.829.9599  
[www.downtownbloomington.org](http://www.downtownbloomington.org)

### **CHRISTMAS AT THE COURTHOUSE**

December 8  
McLean County Museum of History  
309.827.0428  
[www.mchistory.org](http://www.mchistory.org)

### **12 DAYS OF CHRISTMAS**

December 13-24  
Uptown Normal  
309.454.9556  
[www.uptownnormal.com](http://www.uptownnormal.com)

### **CHRISTMAS AT THE MANSIONS TOUR**

December 22  
David Davis, Broadview, & mystery mansions  
309.828.1084  
[www.daviddavismansion.org](http://www.daviddavismansion.org)

### **STATE FARM HOLIDAY CLASSIC BASKETBALL TOURNAMENT**

December 26-29  
Normal Community High School, Normal West  
High School, IWU Shirk Center and  
U.S. Cellular Coliseum  
800.433.8226  
[www.theclassic.org](http://www.theclassic.org)



## **Local Teams**

### **BLOOMINGTON BLAZE HOCKEY**

October-March  
U.S. Cellular Coliseum  
309.434.2980  
[www.bloomingtonblaze.com](http://www.bloomingtonblaze.com)  
The Bloomington Blaze of the Central Hockey League's Turner Conference welcome fans of all ages to enjoy competitive ice hockey.

### **BLOOMINGTON EDGE INDOOR FOOTBALL**

February-June  
U.S. Cellular Coliseum  
800.745.3000  
The Bloomington EDGE is part of the 16-team Indoor Football League, America's premier indoor football league. Fans of the Bloomington EDGE can expect great football, great entertainment and a great value.

### **CENTRAL ILLINOIS DRIVE BASKETBALL**

January-March  
U.S. Cellular Coliseum  
309.434.2843  
[www.drivehoops.com](http://www.drivehoops.com)  
The Central Illinois DRIVE of the Premier Basketball League is Bloomington-Normal's newest sports team. The DRIVE will play ten home games during their inaugural season at the U.S. Cellular Coliseum, under the direction of former Chicago Bull, AJ Guyton!

### **NORMAL CORNBELTERS BASEBALL**

May-September  
The Corn Crib  
309.454.2255  
[www.normalbaseball.com](http://www.normalbaseball.com)  
The Normal CornBelters are beginning their third season as a member of the West Division of the independent Frontier League. Independent baseball serves as a great opportunity for players to acquire greater skills and for fans to show their love for the game!



# Area Education

## ILLINOIS STATE UNIVERSITY

718 West College Avenue  
Normal, IL 61790  
309.438.2111  
[www.illinoisstate.edu](http://www.illinoisstate.edu)

Founded in 1857, Illinois State University is the state's first public university, and is one of the Midwest's oldest institutions of higher education. It is a co-educational, residential university with an emphasis on the undergraduate program, offering more than 188 fields of undergraduate study across 34 academic departments. The Graduate School coordinates 39 master's, two specialist and nine doctoral programs. The 350-acre campus includes more than 60 major buildings with state-of-the-art technology. Watterson Towers is one of the area's most unique structures, as this residence hall is the tallest building between Chicago and St. Louis. Other major facilities include a Center for the Performing Arts, a 360-acre farm, Bone Student Center and Braden Auditorium, a University Planetarium, Redbird Arena and Hancock Stadium. From meeting facilities to cultural opportunities through the arts, and the excitement of numerous sporting events each year, ISU is a vital part of the Bloomington-Normal community.



# STATE

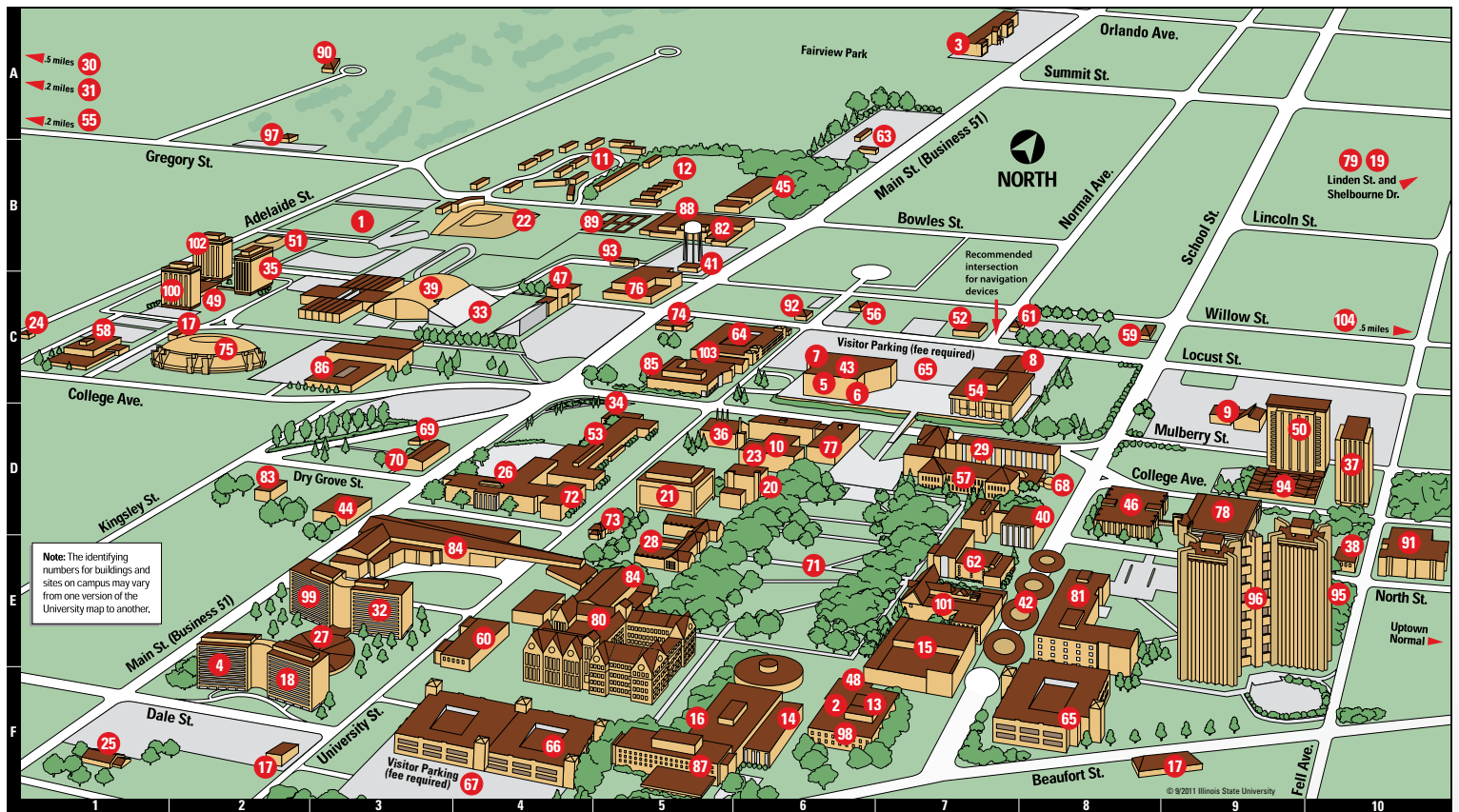
your passion.

[IllinoisState.edu](http://IllinoisState.edu)



Find us on Facebook at  
[Alumni.IllinoisState.edu/facebook](https://www.facebook.com/Alumni.IllinoisState.edu/facebook)





# ILLINOIS STATE UNIVERSITY CAMPUS

- |                                      |   |  |  |
|--------------------------------------|---|--|--|
| 1 Adelaide Soccer Field B3           | 27 Feeney Dining Center E3                            | 52 MCN Nursing Simulation Laboratory C7                | 78 Science Laboratory Building D9                  |
| 2 Allen Theatre F6                   | 28 Fell Hall E5                                       | 53 Metcalf School D5                                   | 79 Shelbourne Apartments B10                       |
| 3 Alumni Center A7                   | 29 Felmley Hall D7                                    | 54 Milner Library C7                                   | 80 State Farm Hall of Business E5                  |
| 4 Atkin Hall E2                      | 30 Gregory Street Property A1                         | 55 Motorcycle Driving Range A1                         | 81 Stevenson Hall E8                               |
| 5 Bone Student Center C6             | 31 Gregory Street Complex A1                          | 56 Motorcycle Safety Program Office C7                 | 82 Stroud Auditorium B6                            |
| 6 Braden Auditorium C6               | 32 Hamilton Hall E3                                   | 57 Moulton Hall D7                                     | 83 Student Accounts Building D2                    |
| 7 Brown Ballroom C6                  | 33 Hancock Stadium C4                                 | 58 Nelson Smith Building C1                            | 84 Student Fitness Center and McCormick Hall E3-E5 |
| 8 Bowling and Billiards Center C8    | 34 Hayden Auditorium D5                               | 59 Office of Energy Management C8                      | 85 Student Services Building C5                    |
| 9 Campus Religious Center D9         | 35 Haynie Hall C2                                     | 60 Office of Residential Life Building E4              | 86 Turner Hall C3                                  |
| 10 Capen Auditorium D6               | 36 Heating Plant D5                                   | 61 Office of Sustainability C8                         | 87 University Galleries F5                         |
| 11 Cardinal Court B5                 | 37 Hewett Hall D10                                    | 62 Old Union E7  | 88 University High School B5                       |
| 12 Carter Harris Building B5         | 38 Honors Program E10                                 | 63 Parking and Transportation Building, Bill Waller B7 | 89 University High School Tennis Courts B5         |
| 13 Centennial East F7                | 39 Horton Field House C3                              | 64 Parking Garage, North University Street C6          | 90 University (President's) Residence A3           |
| 14 Centennial West F6                | 40 Hovey Hall D8                                      | 65 Parking Garage, School Street F8                    | 91 Uptown Crossing E10                             |
| 15 Center for the Performing Arts E7 | 41 Hudelson Building B5                               | 66 Parking Garage, South University Street F4          | 92 Vidette Building C6                             |
| 16 Center for the Visual Arts F5     | 42 In Exchange E8                                     | 67 Parking, Visitor C7 and F4                          | 93 Vitro Center B5                                 |
| 17 Chiller Plant C2, F2, and F9      | 43 InfoCentre C6                                      | 68 Planetarium D8                                      | 94 Vrooman Center D9                               |
| 18 Colby Hall F2                     | 44 Instructional Technology and Development Center D3 | 69 Professional Development Annex D3                   | 95 Watterson Dining Center E10                     |
| 19 Construction Administration B10   | 45 John Green Food Service Building B6                | 70 Professional Development Building D3                | 96 Watterson Towers E9                             |
| 20 Cook Hall D6                      | 46 Julian Hall D8                                     | 71 Quad E6   | 97 Weibring Golf Club A2                           |
| 21 DeGarmo Hall D5                   | 47 Kaufman Football Building C4                       | 72 Rachel Cooper D4                                    | 98 Westhoff Theatre F6                             |
| 22 Duffy Bass Field B4               | 48 Kemp Recital Hall F6                               | 73 Rambo House D5                                      | 99 Whitten Hall E3                                 |
| 23 Edwards Hall D6                   | 49 Linkins Dining Center C2                           | 74 Recreation Services Building C5                     | 100 Wilkins Hall C2                                |
| 24 Eyestone School Museum C1         | 50 Manchester Hall D10                                | 75 Redbird Arena C2                                    | 101 Williams Hall E7                               |
| 25 Facilities Planning Building F1   | 51 Marian Kneer Softball Stadium B2                   | 76 Ropp Agriculture Building C5                        | 102 Wright Hall B2                                 |
| 26 Fairchild Hall D4                 |   | 77 Schroeder Hall D6                                   | 103 211 North University Street Building C5        |
|                                      |   |  | 104 500 North Beech Street Building C10            |

[IllinoisState.edu](http://IllinoisState.edu) | [Alumni.IllinoisState.edu/facebook](http://Alumni.IllinoisState.edu/facebook)

An equal opportunity/affirmative action university encouraging diversity 12-0552 University Marketing and Communications



**ILLINOIS STATE  
UNIVERSITY**  
*Illinois' first public university*

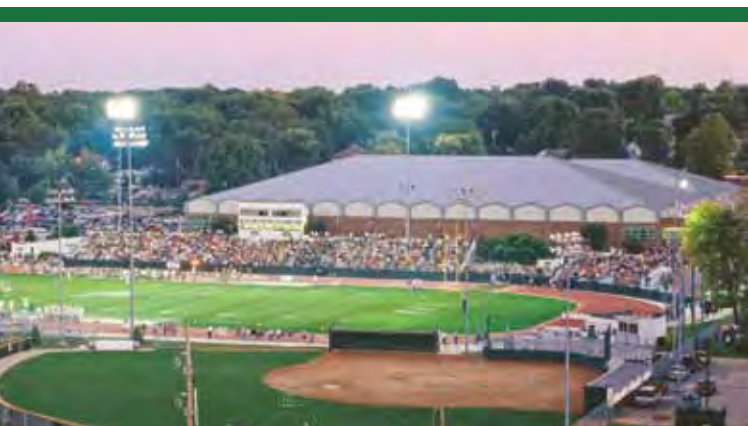




## ILLINOIS WESLEYAN UNIVERSITY

1312 Park Street  
Bloomington, IL 61701  
309.556.1000  
[www.iwu.edu](http://www.iwu.edu)

Illinois Wesleyan University, founded in 1850, is a highly selective, residential liberal arts university with an enrollment of approximately 2,100. The University consists of the College of Liberal Arts, with 17 academic departments; the College of Fine Arts that includes professional Schools of Art, Music and Theatre; and the School of Nursing. Wesleyan faculty members are active scholars who are devoted to undergraduate teaching and engage their students in research and scholarly activity. The beautiful 80-acre campus is a mix of traditional and modern facilities. Recent additions include the state-of-the-art Ames Library, the Center for Natural Sciences and the Shirk Center for Athletics and Recreation, regarded as one of the finest athletic facilities in the country. The newest addition, the Minor Myers Jr. Welcome Center, is a Leadership in Energy and Environmental Design Green Building and is home to the Office of Admissions and the Hart Career Center.



think *v. imagine, reason, consider, believe... }*



ILLINOIS WESLEYAN

[www.iwu.edu](http://www.iwu.edu)





# ILLINOIS WESLEYAN



■ Academic Buildings   
 ■ Administrative Buildings   
 ■ Athletic Facilities   
 ■ Residential Building   
 ■ Other   
 ★ Disability Access or Parking  
 ◆ Visitor Parking: F3, F4, S4, S6, S7; Student Parking: S1–S9; Faculty/Staff Parking: F1–F5

## Campus Buildings and Sites:

- |   |  |   |
|---|--|---|
| 1) Alumni Relations Office                            | 16) Information Technology                                   | 27) Music Building*                               |
| 2) The Ames Library                                   | 17) Joyce Eichhorn Ames School of Art Building*              | • E. Melba Johnson Kirkpatrick Laboratory Theatre |
| 3) Arnold Health Center (Magill Hall, north entrance) | 18) Mark Evans Observatory                                   | 28) Physical and Heat Plant                       |
| 4) Beadles-Morse Courts                               | 19) McPherson Theatre*                                       | 29) Publications, Printing and Mailing Services   |
| 5) Buck Memorial Library                              | 20) Memorial Center  | 30) Security Department                           |
| 6) Center for Liberal Arts                            | • Joslin Atrium  | 31) Sesquicentennial Gates                        |
| 7) Center for Natural Science                         | • Young Main Lounge  | 32) Shaw Hall                                     |
| 8) DeMotte Hall                                       | 21) Myers Welcome Center                                     | 33) Shirk Center                                  |
| 9) Eckley Quadrangle                                  | • Admissions Office  | 34) IWU Softball Field                            |
| 10) English House                                     | • Hart Career Center   | 35) Stevenson Hall (School of Nursing)            |
| 11) Evelyn Chapel                                     | 22) Multicultural Center                                     | • Mellon Center                                   |
| 12) Fort Natatorium                                   | 23) Neis Soccer Field  | 36) Tucci Stadium / Wilder Field                  |
| 13) Hansen Student Center and University Bookstore    | 24) Office of Residential Life (Gulick Hall, north entrance) |   |
| 14) Holmes Hall (Administration Building)             | 25) President's House  |   |
| 15) Horenberger Field                                 | 26) Presser Hall* (School of Music)                          |   |
|   | • Westbrook Auditorium                                       |   |

## Campus Living Units:

- |                                    |                            |
|------------------------------------|----------------------------|
| A) Acacia (Park Place)             | N) Magill Hall             |
| B) Adams Hall                      | O) Martin Hall             |
| C) Alpha Gamma Delta               | P) Munsell Hall            |
| D) Blackstock Hall                 | Q) Pfeiffer Hall           |
| E) Dodds Hall                      | R) Phi Gamma Delta         |
| F) Dolan Hall                      | S) Phi Mu Alpha            |
| G) East Street Apartments          | T) Sigma Alpha Iota        |
| H) Ferguson Hall                   | U) Sigma Chi               |
| I) Gulick Hall                     | V) Sigma Kappa             |
| J) Harriett Fuller Rust House      | W) Sigma Pi (Beadles Hall) |
| K) Kappa Delta                     | X) Tau Kappa Epsilon       |
| L) Kappa Kappa Gamma               | Y) Theta Chi               |
| M) Kemp Hall (International House) | Z) Wilder House            |

\* Alice Millar Center for the Fine Arts (Schools of Art, Music, and Theatre Arts)

[www.iwu.edu](http://www.iwu.edu)



## HEARTLAND COMMUNITY COLLEGE

1500 West Raab Road  
Normal, IL 61761  
309.268.8000  
[www.heartland.edu](http://www.heartland.edu)

The youngest community college in the state, Heartland Community College is an open admission resource for affordable higher education with a focus on student success. More than 40 programs for career training and transfer preparation are offered in an attractive campus setting with multiple new facilities. Among the main facilities on the 140-acre campus is the sustainably constructed, LEED certified Workforce Development Center. In addition to more than 5,200 credit students, Heartland Community College provides a diverse selection of non-credit enrichment, recreation and professional development classes for more than 8,000 community members. The newly constructed Corn Crib houses the Normal CornBelts of the independent Frontier League and is the permanent home of Heartland Hawks softball, baseball and men's and women's soccer teams.

## LINCOLN COLLEGE NORMAL

715 West Raab Road  
Normal, IL 61761  
309.452.0500  
[www.lincolncollege.edu/normal](http://www.lincolncollege.edu/normal)

## HAIRMASTERS INSTITUTE OF COSMETOLOGY, INC.

506 South McClun Street  
Bloomington, IL 61701  
309.828.1884

## PAUL MITCHELL THE SCHOOL

1503 E. College Avenue  
Normal, IL 61761  
309.862.3400  
[www.school.paulmitchell.edu/normal-il](http://www.school.paulmitchell.edu/normal-il)

## MIDWEST COLLEGE OF COSMETOLOGY

755 West Raab Road  
Normal, IL 61761  
309.451.1373  
[www.mcc.lincolncollege.edu](http://www.mcc.lincolncollege.edu)

## High Schools

### BLOOMINGTON HIGH SCHOOL

1202 East Locust Street  
Bloomington, IL 61701  
309.828.5201  
[www.district87.org/bhs](http://www.district87.org/bhs)

### BLOOMINGTON CENTRAL CATHOLIC HIGH SCHOOL

1201 Airport Road  
Bloomington, IL 61704  
309.661.7000  
[www.blmcchs.org](http://www.blmcchs.org)

### NORMAL COMMUNITY HIGH SCHOOL

3900 East Raab Road  
Normal, IL 61761  
309.557.4401  
[www.unit5.org/nchs](http://www.unit5.org/nchs)

### NORMAL COMMUNITY WEST HIGH SCHOOL

501 North Parkside Road  
Normal, IL 61761  
309.557.4402  
[www.unit5.org/ncwhs](http://www.unit5.org/ncwhs)

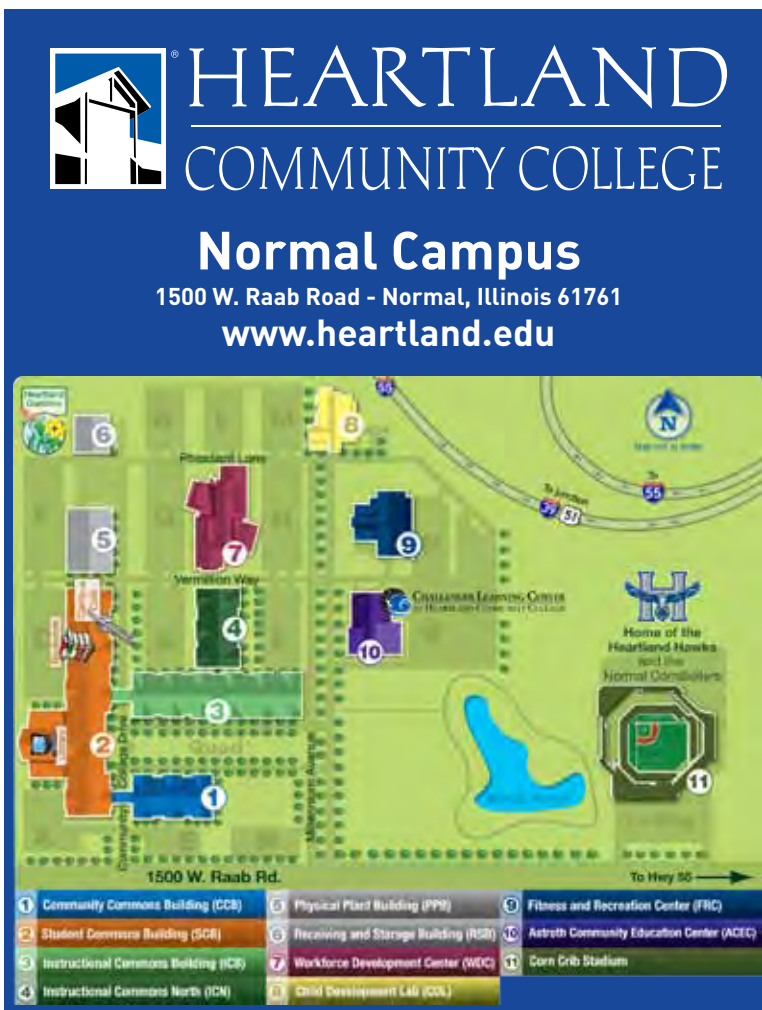
### UNIVERSITY HIGH SCHOOL

500 West Gregory Street  
Normal, IL 61761  
309.438.8346  
[www.uhigh.ilstu.edu](http://www.uhigh.ilstu.edu)





**Credits &  
Confidence  
TRANSFER.**



**HEARTLAND  
COMMUNITY COLLEGE**  
[www.heartland.edu](http://www.heartland.edu)



# Parks & Recreation

## NORMAL PARKS & RECREATION DEPARTMENT

611 South Linden Street  
Normal, IL 61761  
309.454.9540  
[www.normal.org/gov/parksandrec](http://www.normal.org/gov/parksandrec)

The Normal Parks and Recreation Department offers 17 parks encompassing over 400 acres of land, an 18 hole golf course, historical movie theater, Community Activity Center, two outdoor pools, a 10-field softball complex, two dog parks, the Children's Discovery Museum and 15 miles of the Constitution Trail. This department also provides a well-rounded selection of programs and classes for youth, adults and special populations, as well as special events. The mission of the Normal Parks and Recreation Department is to provide citizens and visitors with a clean, safe, well-managed, fiscally sound and environmentally pleasant community. Parks are open from 6:00AM to 11:00PM, alcoholic beverages are prohibited and dogs must be leashed.

## CONSTITUTION TRAIL

[www.constitutiontrail.org](http://www.constitutiontrail.org)

The Constitution Trail is a joint venture between the City of Bloomington and the Town of Normal, and is one of Central Illinois' most unique parks. Approximately 37 miles of trail exist within both communities for walking, hiking, jogging, biking and cross country skiing. Trash receptacles, picnic tables, shelters, port-a-pots and benches are available at various locations along the trail. The trail is open daily from one hour before sunrise to one hour after sunset, and all forms of motorized vehicles are prohibited. The White House Millennium Council has designated the Constitution Trail as a Millennium Trail.

## BLOOMINGTON PARKS, RECREATION & CULTURAL ARTS DEPARTMENT

115 East Washington Street  
Bloomington, IL 61701  
309.434.2260  
[www.bpard.org](http://www.bpard.org)

The Bloomington Parks, Recreation & Cultural Arts Department is composed of five divisions working jointly to accomplish its mission of maintaining and enhancing the quality of life for all citizens of Bloomington by providing park, recreation and leisure opportunities through organized programs and by acquiring, developing, maintaining, preserving and enhancing recreation areas, open spaces and facilities, in the most cost-efficient manner. The Department maintains over 1,100 acres of land including 44 parks sites, three golf courses, two aquatic facilities and an ice rink. The Department also offers programs, classes and facilities for all ages. Parks are open from 6:00AM to 10:00PM, alcoholic beverages are prohibited and pets must be leashed.







## Park Key



## Local Camp Grounds

### COMLARA COUNTY PARK

13001 Recreation Area Drive  
Hudson, IL 61748 • 309.434.6770  
[www.mcleancountyil.gov/parks](http://www.mcleancountyil.gov/parks)  
Open year-round

### KAMP KOMFORT

21408 North 600 East Road  
Carlock, IL 61725 • 309.376.4411  
Free Wi-Fi available

### MORAINES VIEW STATE PARK

27374 Moraine View Park Road  
LeRoy, IL 61752 • 309.724.8032  
[www.dnr.illinois.gov](http://www.dnr.illinois.gov)  
Free Wi-Fi available

## Aquatic Centers

### ANDERSON PARK & AQUATIC CENTER

100 South Maple Street  
Normal, IL 61761 • 309.454.9550  
[www.normal.org/gov/parksandrec](http://www.normal.org/gov/parksandrec)

### FAIRVIEW PARK & AQUATIC CENTER

949 North Main Street  
Normal, IL 61761 • 309.454.9555  
[www.normal.org/gov/parksandrec](http://www.normal.org/gov/parksandrec)

## Bloomington-Normal Parks

### AIRPORT PARK

3010 Winchester Avenue, Bloomington

### ALTON DEPOT PARK

101 Western Avenue, Bloomington

### ANGLER'S LAKE

1017 South Mercer Street, Bloomington

### ATWOOD WAYSIDE

303 North Robinson Street, Bloomington

### BITTNER PARK

3807 Rave Road, Bloomington

### BROOKRIDGE PARK

2904 Ireland Grove Road, Bloomington

### BUCK-MANN PARK

116 Weldon Street, Bloomington

### CARDEN PARK

East Raab Road, Normal

### CLEARWATER PARK

2716 Clearwater Avenue, Bloomington

### EAGLE CREST PARK

2506 Chesapeake Lane, Bloomington

### EMERSON PARK

717 Bell Street, Bloomington

### EVERGREEN PARK

1205 Forrest Avenue, Bloomington

### EWING PARK 1

1420 Towanda Avenue, Bloomington

### EWING PARK 2

1001 Ethell Parkway, Bloomington

### EWING PARK 3

901 Jersey Avenue, Bloomington

### FELL PARK

East Willow Street, Normal

### FELL AVENUE PARK

1301 Fell Avenue, Bloomington

### FORREST PARK

1813 Springfield Road, Bloomington

### FRANKLIN PARK

302 East Chestnut Street, Bloomington

### FRANSEN NATURE AREA

East Raab Road, Normal

# HAWTHORN SUITES BY WYNDHAM Conference Center



*For Business or Pleasure overnight accommodations for your out-of-town guests.*

Hawthorn Suites & Conference Center is a casual, elegant facility designed with guest's comfort in mind. Located at the intersection of I-55 and I-74 & Market Street Exit 160. The Hawthorn Suites offers 73 beautifully appointed suites which feature all the comforts of home.

*For more information call  
309-829-8111 or  
toll free 888-629-3699*

I-55 / I-74 & Market St.  
One Lyon Court  
Bloomington, IL 61701  
[www.hotelbloomington.com](http://www.hotelbloomington.com)

## FRIENDSHIP PARK

719 West Jefferson Street, Bloomington

## HIDDEN CREEK NATURE AREA

Sycamore Street, Normal

## HOLIDAY PARK

800 South McGregor Street, Bloomington

## IRONWOOD PARK

North Linden Avenue, Normal

## MARIE LITTA PARK

317 South Gridley Street, Bloomington

## MARTIN LUTHER KING JR. PARK

North Towanda Avenue, Normal

## MAXWELL PARK

Parkside Road and Gregory Street, Normal

## MCGRAW PARK

3202 Cornelius Drive, Bloomington

## MILLER PARK

1020 South Morris Avenue, Bloomington

## NORTHPOINT SCHOOL & PARK

2602 East College Avenue, Bloomington

## OAKLAND SCHOOL PARK

1605 East Oakland Avenue, Bloomington

## O'NEIL PARK

1515 West Chestnut Street, Bloomington

## ONE NORMAL PLAZA

1110 Douglas Avenue, Normal

## P.J. IRVIN PARK

1601 McKay Drive, Bloomington

## PEPPERRIDGE PARK

2602 Fox Creek Road, Bloomington

## ROLLINGBROOK PARK

1002 Hershey Road, Bloomington

## ROSA PARKS COMMONS

Linden Street and Raab Road, Normal

## SAVANNAH PARK

Shelbourne Drive, Normal

## SHEPARD PARK

Hershey Road & Shepard Road, Normal

## STEVENSON SCHOOL PARK

2106 Arrowhead Drive, Bloomington

## SUBURBAN EAST PARK

3011 Lisa Drive, Bloomington

## SUNNYSIDE PARK

407 East Erickson Avenue, Bloomington

## TIPTON PARK NORTH

2201 Stone Mountain Boulevard, Bloomington

## TIPTON PARK SOUTH

2401 G.E. Road, Bloomington

## UNDERWOOD PARK

Linden Street and Jersey Avenue, Normal

## WHITE OAK PARK

1514 North Cottage Avenue, Bloomington

## WITHERS PARK

204 East Washington Street, Bloomington



**Coming Soon**  
**to an**  
**Auto Plant**  
**Near You!**

**Beginning production of the  
Mitsubishi Outlander Sport, mid-2012**



# *Normal Parks and Recreation... Endless Possibilities to Take Time for FUN!*



**Anderson and Fairview Family Aquatic Centers • Ironwood Golf Course  
The Normal Theater • The Children's Discovery Museum  
Connie Link Amphitheatre • The Constitution Trail and more!**



**Parks and  
Recreation  
Department**

**309-454-9540 • 611 S. Linden St.  
[www.Normal.org](http://www.Normal.org)**





# Community Info

## STATE FARM INSURANCE

One State Farm Plaza  
Bloomington, IL 61710  
800.STATE.FARM  
[www.statefarm.com](http://www.statefarm.com)

State Farm was founded in 1922 by retired farmer and insurance salesman George Jacob "G.J." Mecherle when he sold his first auto policy for \$11.17. Originally a single line auto insurance company, State Farm now offers nearly 100 products and services, in five different lines of business, and handles nearly 35,000 claims per day. State Farm's 65,000 employees and more than 17,800 agents service 81 million policies and accounts throughout the United States and Canada. Roughly 15,000 of those employees work in Bloomington-Normal, also the location of the company's home office. State Farm's mission is to help people manage the risks of everyday life, recover from the unexpected and realize their dreams.

## MITSUBISHI MOTORS NORTH AMERICA, INC.

100 North Mitsubishi Motorway  
Normal, IL 61761  
309.888.8000  
[www.mitsubishicars.com/normal](http://www.mitsubishicars.com/normal)  
[www.mitsubishimanufacturing.com](http://www.mitsubishimanufacturing.com)

Mitsubishi Motors North America, Inc. (MMNA) Manufacturing Division in Normal represents Mitsubishi Motors' only passenger car assembly plant in North America. MMNA operates one of the most technologically advanced automotive manufacturing facilities in the

world and has a current production capacity of 135,000 vehicles. Approximately 1,000 robots are housed on 636 acres with 2.4 million square feet under one roof. The production line is designed to accommodate several different models intermixed on one assembly line. 2012 projects will include the Galant and Outlander Sport SUV. MMNA employs approximately 1,300 people and acts as an economic catalyst by contributing about \$120 million annually to the local economy in taxes, salaries and benefits.

## COUNTRY FINANCIAL

1701 North Towanda Avenue  
Bloomington, IL 61701  
866.COUNTRY (268.6879)  
[www.countryfinancial.com](http://www.countryfinancial.com)

COUNTRY Financial began as a fire and lightning insurance company in 1925, and has been adding products and services to meet the changing needs of their clients ever since. Today, COUNTRY Financial serves about 1 million households and businesses throughout the United States. COUNTRY Financial helps people protect what they have, save for a comfortable future and achieve financial security with insurance and financial products developed and provided through four primary companies. COUNTRY Financial moved their home office to Bloomington in 1960, and is now the third largest employer in Bloomington-Normal with approximately 2,100 employees.





## Important Numbers

### MCLEAN COUNTY EMERGENCY RESPONSE

911

### BLOOMINGTON POLICE DEPARTMENT

309.434.2700

### BLOOMINGTON FIRE DEPARTMENT

309.434.2500

### MCLEAN COUNTY SHERIFF'S DEPARTMENT

309.888.5034

### NORMAL POLICE DEPARTMENT

309.454.9535

### NORMAL FIRE DEPARTMENT

309.454.9610

## Government & County Offices

### CITY OF BLOOMINGTON

109 East Olive Street  
Bloomington, IL 61701  
309.434.2509  
[www.cityblm.org](http://www.cityblm.org)

### MCLEAN COUNTY

104 West Front Street  
Bloomington, IL 61701  
309.888.5110  
[www.mcleancountyil.gov](http://www.mcleancountyil.gov)

### DISTRICT 87 SCHOOLS

300 East Monroe Street  
Bloomington, IL 61701  
309.827.6031  
[www.district87.org](http://www.district87.org)

### ECONOMIC DEVELOPMENT COUNCIL

200 West College Avenue, Ste. 402  
Normal, IL 61761  
309.452.8437  
[www.bnbiz.org](http://www.bnbiz.org)

### MCLEAN COUNTY CHAMBER OF COMMERCE

210 South East Street  
Bloomington, IL 61701  
309.829.6344  
[www.mcleancochamber.org](http://www.mcleancochamber.org)

### TOWN OF NORMAL

100 East Phoenix Avenue  
Normal, IL 61761  
309.454.2444  
[www.normal.org](http://www.normal.org)

### UNIT 5 SCHOOLS

1809 West Hovey Avenue  
Normal, IL 61761  
309.557.4400  
[www.unit5.org](http://www.unit5.org)

## Medical Care

### ADVOCATE BROMENN MEDICAL CENTER

1304 Franklin Avenue  
Normal, IL 61761  
309.454.1400  
[www.advocatehealth.com/bromenn](http://www.advocatehealth.com/bromenn)

### ADVOCATE MEDICAL GROUP URGENT CARE + OCCUPATIONAL MEDICINE

1437 East College Avenue  
Normal, IL 61761  
309.454.4411  
[www.advocatehealth.com/bromenn/amurgent](http://www.advocatehealth.com/bromenn/amurgent)

### OSF MEDICAL GROUP COLLEGE AVENUE

1701 East College Avenue  
Bloomington, IL 61701  
309.664.3000  
[www.osfmedicalgroup.org](http://www.osfmedicalgroup.org)

### OSF ST. JOSEPH HOSPITAL

2200 East Washington Street  
Bloomington, IL 61701  
309.662.3311  
[www.osfstjoseph.org](http://www.osfstjoseph.org)

### OSF ST. JOSEPH PROMPT CARE

- 1001 Mitsubishi Motorway  
Bloomington, IL 61705  
309.828.0806  
[www.osfstjoseph.org](http://www.osfstjoseph.org)
- 1505 Eastland Drive  
Bloomington, IL 61701  
309.663.2100  
[www.osfstjoseph.org](http://www.osfstjoseph.org)
- 2200 Fort Jesse Road #100  
Normal, IL 61761  
309.661.6280  
[www.osfstjoseph.org](http://www.osfstjoseph.org)



## Local Libraries

### BLOOMINGTON PUBLIC LIBRARY

205 East Olive Street  
Bloomington, IL 61702  
309.828.6091  
[www.bloomingtonlibrary.org](http://www.bloomingtonlibrary.org)

### NORMAL PUBLIC LIBRARY

206 West College Avenue  
Normal, IL 61761  
309.452.1757  
[www.normalpl.org](http://www.normalpl.org)

## Population

### BLOOMINGTON

74,184

### NORMAL

52,799

### MCLEAN COUNTY

167,699



## Major Employers

The Bloomington-Normal area has several large employers that provide not only a stable base of employment, but their demand for services, products and commodities has an impact on other businesses in Bloomington-Normal, thus providing employment for many others in the community. The top 15 employers and their estimated amount of full-time employees are listed below.

### STATE FARM INSURANCE COMPANIES

14,450

### ILLINOIS STATE UNIVERSITY

3,259

### COUNTRY FINANCIAL

2,084

### UNIT 5 SCHOOLS

1,826

### ADVOCATE BROMENN MEDICAL CENTER

1,522

### MITSUBISHI MOTORS NORTH AMERICA, INC.

1,278

### OSF ST. JOSEPH MEDICAL CENTER

1,140

### AFNI, INC.

900

### MCLEAN COUNTY

806

### CITY OF BLOOMINGTON

743

### DISTRICT 87 SCHOOLS

691

### GROWMARK, INC.

528

### ILLINOIS WESLEYAN UNIVERSITY

468

### TOWN OF NORMAL

458

### NESTLE USA

380

## Area Communities

The Bloomington-Normal Area Convention & Visitors Bureau represents 20 communities outside of Bloomington-Normal throughout McLean County, including:

### ANCHOR

### ARROWSMITH

309.727.1150

### BELLFLOWER

309.727.1150

### CARLOCK

309.376.2219

### CHENOA

815.945.7619 • [www.chenoail.org](http://www.chenoail.org)

### COLFAX

309.723.3261 • [www.colfaxillinois.com](http://www.colfaxillinois.com)

### COOKSVILLE

309.725.3294

### DANVERS

309.963.4928 • [www.villageofdanvers.org](http://www.villageofdanvers.org)

### DOWNS

309.378.3221

### ELLSWORTH

309.724.8412

### GRIDLEY

309.747.2000 • [www.villageofgridley.org](http://www.villageofgridley.org)

### HEYWORTH

309.473.2811 • [www.heyworthil.gov](http://www.heyworthil.gov)

### HUDSON

309.726.1070 • [www.hudsonil.org](http://www.hudsonil.org)

### LEROY

309.962.3031 • [www.leroy.org](http://www.leroy.org)

### LEXINGTON

309.365.3331 • [www.lexingtonillinois.org](http://www.lexingtonillinois.org)

### MCLEAN

309.874.2102

### SAYBROOK

309.475.3161 • [www.saybrookil.com](http://www.saybrookil.com)

### SHIRLEY

### STANFORD

309.379.2251 • [www.stanfordil.org](http://www.stanfordil.org)

### TOWANDA

309.728.2811 • [www.towandail.org](http://www.towandail.org)



# REST EASY.

WARM COOKIES  
DELICIOUS FOOD  
HOSPITALITY  
SOFT PILLOWS  
FRIENDLY SERVICE



**SNYDER**  
THE SNYDER COMPANIES  
APARTMENTS | HOTELS | INSURANCE | REAL ESTATE



**309.664.6446**

10 BRICKYARD DRIVE | BLOOMINGTON, IL 61701  
[WWW.BLOOMINGTON.DOUBLETREE.COM](http://WWW.BLOOMINGTON.DOUBLETREE.COM)

EVERYONE DESERVES A SUITE EXPERIENCE



**EASTLAND SUITES**  
HOTEL & CONFERENCE CENTER



MORE SPACE  
*comfort*



MORE SERVICE  
*top rated*



MORE STYLE  
*unique*

**SNYDER**  
THE SNYDER COMPANIES  
APARTMENTS | HOTELS | INSURANCE | REAL ESTATE

309.662.0000  
1801 EASTLAND DR  
BLOOMINGTON IL 61704  
[WWW.EASTLANDSUITES.COM](http://WWW.EASTLANDSUITES.COM)

# A Truly Exceptional Experience

- Surrounded by the area's finest shopping, dining and entertainment
- 228 luxurious guest rooms for a perfect night's rest
- Caffeina's Marketplace Cafe featuring Starbucks Coffee
- Jesse's Grille featuring unique American cuisine
- Jesse's Lounge serving drinks daily until midnight
- Complete fitness center and indoor pool
- Over 23,000 square feet of flexible event and meeting space

To make a reservation or book a group event, contact 309.862.9000 or visit us online.

**Marriott**   
BLOOMINGTON-NORMAL  
HOTEL & CONFERENCE CENTER



The only 4 Diamond Property between Chicago & St. Louis.

**[www.marriottnormal.com](http://www.marriottnormal.com)**  
201 Broadway Avenue | Normal, Illinois







# Transportation

## BLOOMINGTON-NORMAL AMTRAK STATION

100 East Parkinson Street  
Normal, IL 61761  
309.862.2000 • 800.872.7245  
[www.amtrak.com](http://www.amtrak.com)

Amtrak serves Bloomington-Normal on a daily basis with stops at the Normal (BNL) station located on East Parkinson Street, just a few steps from Uptown Normal. The Bloomington-Normal station is the second busiest in Illinois, behind Chicago, with more than 200,000 passengers each year. Travel to and from Bloomington-Normal using one of ten daily trains on either the Lincoln or Texas Eagle Service.

## CENTRAL ILLINOIS REGIONAL AIRPORT

3201 CIRA Drive  
Bloomington, IL 61704  
309.663.7383  
[www.cira.com](http://www.cira.com)

Located off of Veterans Parkway on Route 9, the Central Illinois Regional Airport has everything visitors need and more in an airport. In addition to air service to every corner of the globe, CIRA offers free parking, year-round shuttle service, five car rental agencies inside the terminal, a gift shop and two convenient dining options. In addition, conference rooms and a VIP lounge cater to busy business travelers.

## Airlines

### AIRTRAN AIRWAYS

800.AIRTRAN (247.8726)  
[www.airtran.com](http://www.airtran.com)  
Flights to Atlanta & Orlando

### AMERICAN EAGLE

800.433.7300  
[www.aa.com](http://www.aa.com)  
Flights to Chicago & Dallas-Ft. Worth

### DELTA CONNECTION

800.221.1212  
[www.delta.com](http://www.delta.com)  
Daily Flights to Atlanta, Detroit & Minneapolis-St. Paul

## Air Charter

### IMAGE AIR

2933 East Empire Street  
Bloomington, IL 61704  
309.662.2302  
[www.imageair.com](http://www.imageair.com)



## Auto Rental

### AVIS RENT-A-CAR

309.663.5831  
www.avis.com

### BUDGET

309.661.8029  
www.budget.com

### ENTERPRISE

309.661.8500  
www.enterprise.com

### HERTZ RENT-A-CAR

309.663.5201  
www.hertz.com

### NATIONAL CAR RENTAL & ALAMO CAR RENTAL

309.663.7353  
www.nationalcar.com  
www.alamo.com

## Bus Service

### BLOOMINGTON-NORMAL PUBLIC TRANSIT SYSTEM

309.828.9833  
www.bnpts.com

### BURLINGTON TRAILWAYS

800.992.4618  
www.burlingtontrailways.com

### GREYHOUND BUS LINES

309.827.5599  
www.greyhound.com

### ILLINOIS CENTRAL SCHOOL BUS

309.828.4373  
www.illinois-central.com

### MEGABUS

877.462.6342  
www.megabus.com

### PEORIA CHARTER COACH

800.448.0572  
www.peoriacharter.com

## Limousine Service

### AARON'S PARTY BUS & LIMOUSINE

309.662.6220

### ALLSTARZ LIMOUSINES

309.820.1000

### BOB'S BLUE NITE LIMO

309.663.0373

### CASSANO LIMOUSINE

309.369.2655  
www.cassanolimo.com

### ELEGANT LIMOUSINE

309.888.4900  
www.elegantlimoandbus.com

## Taxi Service

### BEYER TWIN CITY CAB

1001 West Washington Street  
Bloomington, IL 61701  
309.829.7923

### CHECKER CAB

103 East Stewart Street  
Bloomington, IL 61701  
309.828.0123  
www.bloomingtonchecker.com

### CIRCLE CITY

1001 West Washington Street  
Bloomington, IL 61701  
309.829.5342

### RED TOP CAB

208 East Locust Street  
Bloomington, IL 61701  
309.827.9707

Taking  
**YOU**  
Above & Beyond



■ LOWER FARES ■ MORE FLIGHTS ■ CONVENIENT LOCATION ■

*AirTran*  
AIRWAYS

American Airlines  
American Eagle

DELTA

The Central Illinois Regional Airport at Bloomington-Normal, centrally located in the heart of Illinois, offers air service to every corner of the globe. With unique features like non-stop Florida flights and free parking . . . the Central Illinois Regional Airport takes YOU above and beyond. Visit us online at [www.cira.com](http://www.cira.com).



**Central Illinois  
Regional Airport**

at Bloomington-Normal

Your *Easy, Low-Cost* Way to Fly!

[www.cira.com](http://www.cira.com)

# Accommodations

The Bloomington-Normal area boasts dozens of options for overnight accommodations. From Bed and Breakfasts to full-service and limited-service hotels, there's a style and rate to fit every budget. Many of our fine hotels also offer weekend packages that are perfect for families, golf outings, shopping trips or a romantic getaway. The Bloomington-Normal Area Convention and Visitors Bureau implements a Hotel Standards program; the purpose of which is to provide hotel quality assurance for area visitors.

## STAY WITH US!







### AMERICAS BEST VALUE INN

6 Traders Circle  
Normal, IL 61761  
309.454.4070 • 888.315.2378  
www.americasbestvalueinn.com



### BAYMONT INN & SUITES

604 IAA Drive  
Bloomington, IL 61701  
309.662.2800 • 877.229.6668  
www.baymontinns.com



### CANDLEWOOD SUITES HOTEL

203 Susan Drive  
Normal, IL 61761  
309.862.4100 • 877.CANDLEWOOD  
www.candlewoodsuites.com



### THE CHATEAU HOTEL & CONFERENCE CENTER

1601 Jumer Drive  
Bloomington, IL 61704  
309.662.2020 • 866.690.4006  
www.chateauhotel.biz

CVB Hotel Standards   Guest Rooms   Meeting Space ft<sup>2</sup>   Pool   Wi-Fi   Fitness   Pets   Restaurant

	100	600	Indoor				
★	103	480	Outdoor				
★	110	500					

★	180	9,000	Indoor				
---	-----	-------	--------	--	--	--	--

The Chateau Hotel & Conference Center is a unique-themed, full-service hotel and conference center offering beautifully designed, newly appointed rooms and suites. Four-poster beds, fireplaces, deep rich tapestry, elegant oil paintings and the glow of custom woodwork can all be found here.



### COMFORT SUITES EAST

310 B Greenbriar Drive  
Normal, IL 61761  
309.452.8588 • 800.4.CHOICE  
www.choicehotels.com



### COMFORT SUITES WEST

908 Maple Hill Road  
Bloomington, IL 61704  
309.834.4700 • 877.424.6423  
www.choicehotels.com



### COUNTRY INN & SUITES AIRPORT

2403 East Empire Street  
Bloomington, IL 61704  
309.662.3100 • 800.596.2375  
www.countryinns.com



### COUNTRY INN & SUITES WEST

923 Maple Hill Road  
Bloomington, IL 61704  
309.828.7177 • 800.596.2375  
www.countryinns.com



### COURTYARD BY MARRIOTT

310 A Greenbriar Drive  
Normal, IL 61761  
309.862.1166 • 800.321.2211  
www.marriott.com

★	60	275	Indoor				
★	68		Outdoor				
★	82	625	Indoor				
	63		Indoor				
★	78	675	Indoor				



### DAYS INN

1707 West Market Street  
Bloomington, IL 61701  
309.829.6292 • 888.440.2021  
www.daysinn.com



### DOUBLETREE BY HILTON

10 Brickyard Drive  
Bloomington, IL 61701  
309.664.6446 • 800.222.TREE  
www.bloomington.doubletree.com



### EASTLAND SUITES HOTEL & CONFERENCE CENTER

1801 Eastland Drive  
Bloomington, IL 61704  
309.662.0000  
www.eastlandsuites.com



### ECONOLODGE

403 Brock Drive  
Bloomington, IL 61701  
309.829.3100 • 800.4.CHOICE  
www.choicehotels.com



### EXTENDED STAY AMERICA

1805 South Veterans Parkway  
Bloomington, IL 61701  
309.662.8533 • 800.EXTSTAY  
www.extendedstayhotels.com



### FAIRFIELD INN & SUITES

1014 Wylie Drive  
Bloomington, IL 61705  
309.827.8000 • 800.228.2800  
www.marriott.com/bmifb



### HAMPTON INN & SUITES

320 South Towanda Avenue  
Normal, IL 61761  
309.452.8900 • 800.HAMPTON  
www.hamptoninnnormal.com



### HAMPTON INN WEST

906 Maple Hill Road  
Bloomington, IL 61704  
309.829.3700 • 800.HAMPTON  
www.hamptoninn.com



### HAWTHORN SUITES & CONFERENCE CENTER

1 Lyon Court  
Bloomington, IL 61701  
309.829.8111  
www.hotelbloomington.com

CVB Hotel Standards	Guest Rooms	Meeting Space ft <sup>2</sup>	Pool	Wi-Fi	Fitness	Pets	Restaurant
	56		Indoor				
★	197	15,000	Indoor				
The hotel's warmly furnished guest rooms and luxuriously appointed whirlpool suites feature exceptional comforts including Sweet Dreams beds, Wolfgang Puck coffee, Citron by Crabtree & Evelyn amenities, complimentary parking and complimentary wireless high speed internet access. The adjoining T.G.I. Friday's Restaurant is another added bonus to staying at the DoubleTree by Hilton.							
★	112	3,200	Indoor				
Conveniently located one block off Veterans Parkway near restaurants and shopping, guests start their mornings with a complimentary hot breakfast and unwind in the evenings with a complimentary cocktail hour. Enjoy spacious suites with full kitchens, Wi-Fi, picnic areas with gas grills and more! Everyone deserves a suite experience!							
	30						
	101						
★	76		Indoor				
★	128	1,058	Indoor				
Located in Normal's Shoppes at College Hills right off Veterans Parkway. The location, coupled with complimentary On the House hot breakfast buffet, Wi-Fi, indoor pool and fitness center make for a great stay at the award-winning Hampton Inn & Suites Bloomington-Normal.							
★	73		Indoor				
★	73	3,000	Indoor				
The Hawthorn Suites & Conference Center is a casual, elegant facility designed with guest comfort in mind. The hotel's beautifully appointed suites feature all the comforts of home. Each room is equipped with spacious, well-lit work areas, high-speed internet access, a refrigerator, microwave and coffee maker.							





### HOLIDAY INN EXPRESS LEROY

705 South Persimmons Court  
LeRoy, IL 61752  
309.962.4439 • 800.HOLIDAY  
www.hiexpress.com



### HOLIDAY INN EXPRESS HOTEL & SUITES

1715 Parkway Plaza  
Normal, IL 61761  
309.862.1600 • 800.HOLIDAY  
www.hiexpress.com



### HOLIDAY INN HOTEL & SUITES

3202 East Empire Street  
Bloomington, IL 61704  
309.662.4700 • 800.HOLIDAY  
www.holidayinn.com/bloomingtonil



### LA QUINTA INN

505 Brock Drive  
Bloomington, IL 61701  
309.828.6000 • 800.SLEEPLO  
www.lq.com



### MARRIOTT HOTEL & CONFERENCE CENTER

201 Broadway Avenue  
Normal, IL 61761  
309.862.9000 • 800.627.7468  
www.marriottnormal.com

CVB Hotel Standards	Guest Rooms	Meeting Space ft <sup>2</sup>	Pool	Wi-Fi	Fitness	Pets	Restaurant
---------------------	-------------	-------------------------------	------	-------	---------	------	------------

	63		Indoor				
★	85	3,000	Indoor				
★	126	5,000	Indoor				
	100	650					
★	228	23,000	Indoor				

This contemporary, award-winning hotel features an indoor pool, game room and on-site laundry services. Flat panel HD TVs, iPod docking station clock radios, microwaves and refrigerators are available in each luxurious guest room. In addition, the adjoining Baxters American Grille offers a casual dining experience serving breakfast, lunch and dinner.

The cornerstone of Uptown Normal's renewal, the Marriott Hotel & Conference Center is surrounded by the area's finest shopping, dining and entertainment. The hotel features upscale guest rooms for a perfect night's rest, Caffeina's Marketplace Café, Jesse's Grill and Jesse's Lounge, and is the only AAA Four Diamond Property between Chicago and St. Louis!



### MOTEL 6

1600 North Main Street  
Normal, IL 61761  
309.452.0422 • 800.4.MOTEL6  
www.motel6.com



### MOTEL 6

202 Landmark Drive  
Normal, IL 61761  
309.454.6600 • 800.4.MOTEL6  
www.motel6.com



### PARKE HOTEL & CONFERENCE CENTER

1413 Leslie Drive  
Bloomington, IL 61704  
309.662.4300  
www.parkehotel.com



### QUALITY INN & SUITES EAST

1803 East Empire Street  
Bloomington, IL 61704  
309.662.7100 • 800.4.CHOICE  
www.choicehotels.com



### QUALITY INN & SUITES WEST

401 Brock Drive  
Bloomington, IL 61701  
309.829.7602 • 800.4.CHOICE  
www.qualityinnbloomington.com



### RAMADA LIMITED & SUITES

919 Maple Hill Road  
Bloomington, IL 61704  
309.828.0900 • 800.2.RAMADA  
www.ramada.com



### RED ROOF INN BLOOMINGTON

1905 West Market Street  
Bloomington, IL 61701  
309.827.533 • 800.RED.ROOF  
www.redroof.com



### RED ROOF INN LEROY

1 Demma Drive  
LeRoy, IL 61752  
309.962.4700 • 800.RED.ROOF  
www.redroof.com



### SIGNATURE INN

101 South Veterans Parkway  
Normal, IL 61761  
309.454.4044 • 800.822.5252  
www.signatureinns.com

	97		Outdoor				
	108	1,100	Outdoor				
★	70	11,500	Indoor				
	89		Outdoor				
	83	2,100	Indoor				
	64	250	Indoor				
	94						
	41						
	124	1,000	Outdoor				





### SUPER 8 BLOOMINGTON

818 IAA Drive  
Bloomington, IL 61701  
309.663.2388 • 800.800.8000  
www.super8.com



### SUPER 8 CHENOA

505 Hoselton Drive  
Chenoa, IL 61726  
815.945.5900 • 800.800.8000  
www.super8.com



### SUPER 8 MCLEAN

500 East South Street  
McLean, IL 61754  
309.874.2366 • 800.800.8000  
www.super8.com



### SUPER 8 NORMAL

2 Traders Circle  
Normal, IL 61761  
309.454.5858 • 800.800.8000  
www.super8.com

**BURR  
HOUSE**

### BURR HOUSE BED & BREAKFAST

210 East Chestnut Street  
Bloomington, IL 61701  
309.828.7686 • 800.449.4182  
www.burrhouse.com

VROOMAN MANSION  
1869

### VROOMAN MANSION BED & BREAKFAST

701 East Taylor Street  
Bloomington, IL 61701  
309.828.8816 • 877.346.6488  
www.vroomanmansion.com

CVB Hotel Standards	Guest Rooms	Meeting Space ft <sup>2</sup>	Pool	Wi-Fi	Fitness	Pets	Restaurant
	60						
	38						
	41						
	52						
	6						
	7						

## CVB HOTEL STANDARDS

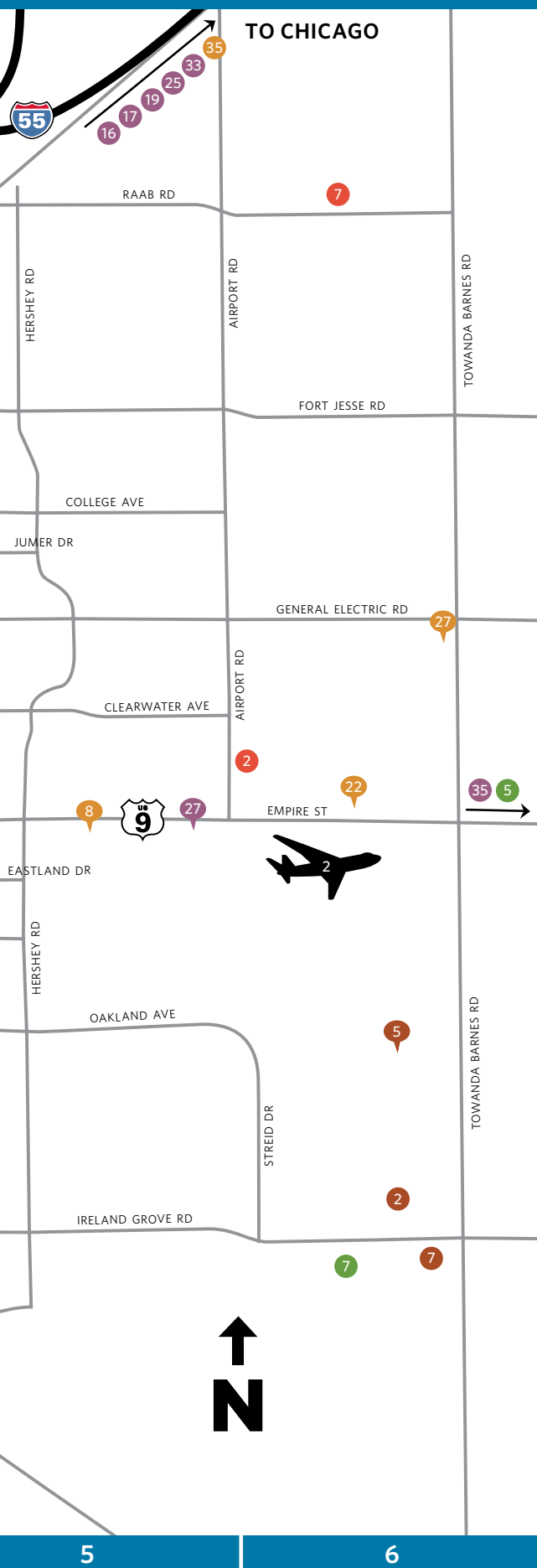
The Bloomington-Normal Area Convention and Visitors Bureau implements a Hotel Standards program; the purpose of which is to provide hotel quality assurance for area visitors. The program has been updated each year with a secret shopper rating all Bloomington-Normal hotels on a percentage scale. All hotels listed in this guide were rated in 2011 and achieved a passing score. Those hotels marked with a gold star received a rating of 90% or higher. Congratulations to all of our outstanding hotels!



**E**







## ACCOMMODATIONS

- |   |    |
|---|----|
| 1. Americas Best Value Inn                    | A3 |
| 2. Baymont Inn & Suites                       | C4 |
| 3. Burr House Bed & Breakfast                 | C3 |
| 4. Candlewood Suites Hotel                    | B5 |
| 5. The Chateau Hotel & Conference Center      | B5 |
| 6. Comfort Suites East                        | B5 |
| 7. Comfort Suites West                        | C2 |
| 8. Country Inn & Suites Airport               | C5 |
| 9. Country Inn & Suites West                  | C2 |
| 10. Courtyard by Marriott                     | B5 |
| 11. Days Inn                                  | C2 |
| 12. DoubleTree by Hilton                      | D4 |
| 13. Eastland Suites Hotel & Conference Center | C5 |
| 14. Econolodge                                | C2 |
| 15. Extended Stay America                     | D4 |
| 16. Fairfield Inn & Suites                    | C2 |
| 17. Hampton Inn & Suites                      | B4 |
| 18. Hampton Inn West                          | C2 |
| 19. Hawthorn Suites & Conference Center       | C2 |
| 20. Holiday Inn Express LeRoy                 | E4 |
| 21. Holiday Inn Express Hotel & Suites        | B5 |
| 22. Holiday Inn Hotel & Suites                | C6 |
| 23. La Quinta Inn                             | C2 |
| 24. Marriott Hotel & Conference Center        | B3 |
| 25. Motel 6                                   | A3 |
| 26. Motel 6                                   | B4 |
| 27. Parke Hotel & Conference Center           | C6 |
| 28. Quality Inn & Suites East                 | C5 |
| 29. Quality Inn & Suites West                 | C2 |
| 30. Ramada Limited & Suites                   | C2 |
| 31. Red Roof Inn Bloomington                  | C2 |
| 32. Red Roof Inn LeRoy                        | E4 |
| 33. Signature Inn                             | B4 |
| 34. Super 8 Bloomington                       | C4 |
| 35. Super 8 Chenoa                            | A5 |
| 36. Super 8 McLean                            | E2 |
| 37. Super 8 Normal                            | A3 |
| 38. Vrooman Mansion Bed & Breakfast           | D3 |

## AREA EDUCATION

- |                                 |    |
|---------------------------------|----|
| 1. Bloomington High School      | C4 |
| 2. Central Catholic High School | C6 |
| 3. Heartland Community College  | A2 |
| 4. Illinois State University    | B3 |
| 5. Illinois Wesleyan University | C3 |
| 6. Lincoln College-Normal       | A3 |
| 7. Normal Community High School | A6 |
| 8. Normal West High School      | B2 |
| 9. University High School       | B3 |

## COMMUNITY

- |                                      |        |
|--------------------------------------|--------|
| 1. Advocate BroMenn Medical Center   | C3     |
| 2. Bloomington City Hall             | D3     |
| 3. Bloomington Public Library        | D3     |
| 4. COUNTRY Financial Home Office     | C4     |
| 5. Economic Development Council      | B3     |
| 6. McLean County Chamber of Commerce | D3     |
| 7. Mitsubishi Motors North America   | B1     |
| 8. Normal City Hall                  | B3     |
| 9. Normal Public Library             | B3     |
| 10. OSF St. Joseph Hospital          | C4     |
| 11. State Farm Home Office           | D4, E4 |

## SHOPPING

- |                                |    |
|--------------------------------|----|
| • Eastland Mall                | C4 |
| • Downtown Bloomington         | D3 |
| • The Shoppes at College Hills | B4 |
| • Uptown Normal                | B3 |

## ATTRACTIONS

- |   |    |
|---|----|
| 1. Bloomington Center for the Performing Arts       | C3 |
| 2. Braden Auditorium                                | B3 |
| 3. Challenger Learning Center                       | A2 |
| 4. Children's Discovery Museum                      | B3 |
| 5. Comlara County Park                              | A2 |
| 6. Community Players Theatre                        | C4 |
| 7. Conklin's Barn II Dinner Theatre                 | A1 |
| 8. David Davis Mansion                              | C3 |
| 9. Ecology Action Center                            | B3 |
| 10. Empire Township Historical Museum               | E3 |
| 11. Ewing Cultural Center & Genevieve Green Gardens | C4 |
| 12. Funk's Grove Pure Maple Sirup                   | E2 |
| 13. Funk's Prairie Home & Gem & Mineral Museum      | E2 |
| 14. Grady's Family Fun Park                         | D4 |
| 15. Grand Village of the Kickapoo Park              | E3 |
| 16. Historic Route 66 Memory Lane                   | A5 |
| 17. ISU Farm  | A5 |
| 18. ISU Planetarium                                 | B3 |
| 19. Matthew T. Scott Home                           | A5 |
| 20. McLean County Arts Center                       | C3 |
| 21. McLean County Museum of History                 | C3 |
| 22. Miller Park Pavilion & War Memorial             | D3 |
| 23. Miller Park Zoo                                 | D3 |
| 24. Normal Theater                                  | B3 |
| 25. Patton Log Cabin                                | A5 |
| 26. Pepsi Ice Center                                | D3 |
| 27. Prairie Aviation Museum                         | C5 |
| 28. Rike House Museum                               | E4 |
| 29. Ropp Jersey Cheese Farm                         | B1 |
| 30. Simpkins War Museum                             | E3 |
| 31. Stevenson Graves at Evergreen Memorial Cemetery | D3 |
| 32. Sugar Grove Nature Center                       | E2 |
| 33. Telephone Museum of Gridley                     | A5 |
| 34. Timber Pointe Outdoor Center                    | A2 |
| 35. Twin Groves Wind Farm                           | C6 |
| 36. Upper Limits Rock Climbing                      | D2 |
| 37. USA Ballet                                      | C3 |
| 38. U.S. Cellular Coliseum                          | D3 |
| 39. White Oak Vineyards, Inc.                       | A1 |

## EVENT COMPLEXES

- |  |    |
|--|----|
| 1. Champion Fields   | B2 |
| 2. Community Soccer Fields                                 | D6 |
| 3. The Corn Crib   | A3 |
| 4. Extra Innings   | E3 |
| 5. Game Time Gym II  | D6 |
| 6. McLean County Fairgrounds/Interstate Center             | C1 |
| 7. McLean County Pony Fields at the Shira Baseball Complex | E6 |

## GOLF COURSES

- |                               |    |
|-------------------------------|----|
| 1. The Den at Fox Creek       | E1 |
| 2. Golf Learning Center       | C2 |
| 3. Hazy Hills Golf Course     | A2 |
| 4. Highland Park Golf Course  | D3 |
| 5. Indian Springs Golf Club   | C6 |
| 6. Ironwood Golf Course       | A4 |
| 7. The Links at Ireland Grove | E6 |
| 8. Prairie Vista Golf Course  | E3 |
| 9. Weibring Golf Club at ISU  | B3 |

## TRANSPORTATION

- |                                      |    |
|--------------------------------------|----|
| 1. AMTRAK Station                    | B3 |
| 2. Central Illinois Regional Airport | C6 |

Map is not to scale. Please contact the Bloomington-Normal Area Convention and Visitors Bureau for help finding specific locations.

# Good neighbors. Solid values.

**It's no surprise why Bloomington-Normal is such a thriving community.**

It starts with solid values like responsibility, integrity, and doing what's right – that's what has helped us remain the nation's #1 auto insurer\* for 70 years.

**GET TO A BETTER STATE™. CALL AN AGENT OR VISIT US ONLINE TODAY.**



**State Farm**

statefarm.com®

\*Based on 2010 written premium as reported by SNL Financial

State Farm Mutual Automobile Insurance Company, Bloomington, IL